

## Product datasheet for **TA388486**

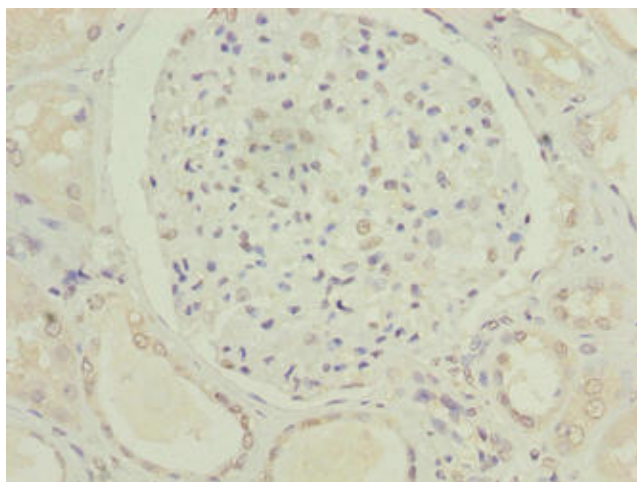
### C5orf24 Rabbit Polyclonal Antibody

#### Product data:

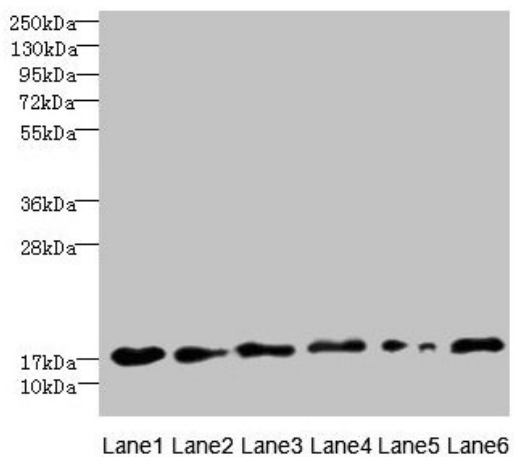
Product Type:	Primary Antibodies
Applications:	IHC, WB
Recommended Dilution:	Recommended dilution: WB:1:1000-1:5000, IHC:1:20-1:200
Reactivity:	Mouse, Human
Host:	Rabbit
Isotype:	IgG
Clonality:	Polyclonal
Immunogen:	Recombinant Human UPF0461 protein C5orf24 protein (7-188AA)
Formulation:	Preservative: 0.03% Proclin 300 Constituents: 50% Glycerol, 0.01M PBS, PH 7.4
Concentration:	lot specific
Purification:	Antigen Affinity Purified
Conjugation:	Unconjugated
Storage:	Upon receipt, store at -20°C or -80°C. Avoid repeated freeze.
Stability:	1 year from dispatch.
Database Link:	<a href="#">Q7Z6I8</a>



[View online »](#)

**Product images:**

Immunohistochemistry of paraffin-embedded human kidney tissue using TA388486 at dilution of 1:100

**Western blot**

All lanes: C5orf24 antibody at 0.3 $\mu$ g/ml

Lane 1: Mouse gonadal tissue

Lane 2: K562 whole cell lysate

Lane 3: THP-1 whole cell lysate

Lane 4: U87 whole cell lysate

Lane 5: HepG2 whole cell lysate

Lane 6: Hela whole cell lysate

Secondary

Goat polyclonal to rabbit IgG at 1/10000 dilution

Predicted band size: 21, 17 kDa

Observed band size: 17 kDa