

Product datasheet for **TA388478**

FGD6 Rabbit Polyclonal Antibody

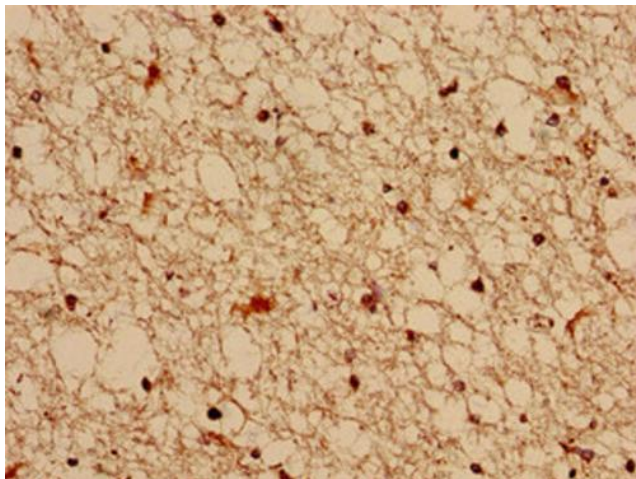
Product data:

Product Type:	Primary Antibodies
Applications:	IHC, WB
Recommended Dilution:	Recommended dilution: WB:1:500-1:5000, IHC:1:20-1:200
Reactivity:	Human
Host:	Rabbit
Isotype:	IgG
Clonality:	Polyclonal
Immunogen:	Recombinant Human FYVE, RhoGEF and PH domain-containing protein 6 protein (1138-1352AA)
Formulation:	Preservative: 0.03% Proclin 300 Constituents: 50% Glycerol, 0.01M PBS, PH 7.4
Concentration:	lot specific
Purification:	>95%, Protein G purified
Conjugation:	Unconjugated
Storage:	Upon receipt, store at -20°C or -80°C. Avoid repeated freeze.
Stability:	1 year from dispatch.
Database Link:	Q6ZV73
Background:	May activate CDC42, a member of the Ras-like family of Rho- and Rac proteins, by exchanging bound GDP for free GTP. May play a role in regulating the actin cytoskeleton and cell shape.

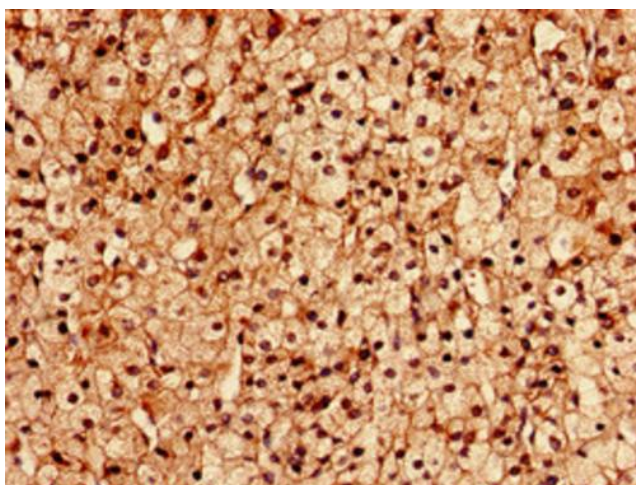


[View online »](#)

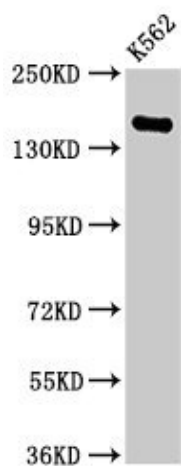
Product images:



Immunocytochemistry analysis of human brain tissue using TA388478 at dilution of 1:100



Immunocytochemistry analysis of human adrenal gland tissue using TA388478 at dilution of 1:100



Western Blot
 Positive WB detected in: K562 whole cell lysate
 All lanes: FGD6 antibody at 2.8µg/ml
 Secondary
 Goat polyclonal to rabbit IgG at 1/50000 dilution
 Predicted band size: 161, 155 kDa
 Observed band size: 161 kDa