

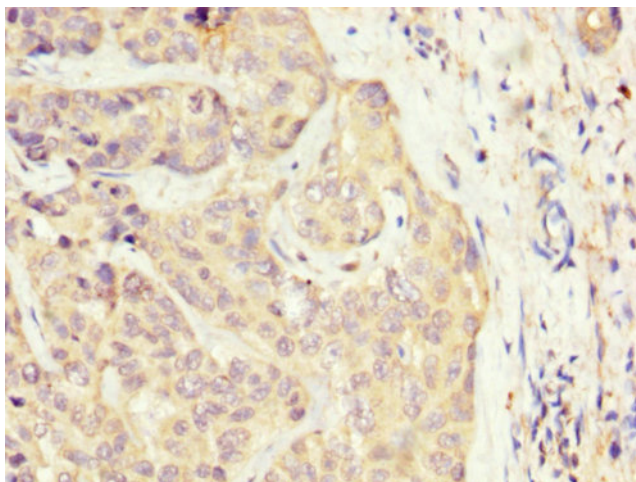
Product datasheet for **TA388476**

SLC22A25 Rabbit Polyclonal Antibody

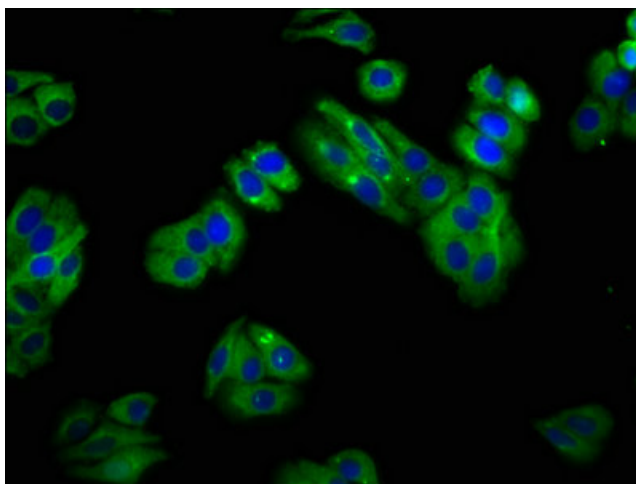
Product data:

Product Type:	Primary Antibodies
Applications:	IF, IHC, WB
Recommended Dilution:	Recommended dilution: WB:1:500–1:5000, IHC:1:100–1:300, IF:1:50–1:200
Reactivity:	Human
Host:	Rabbit
Isotype:	IgG
Clonality:	Polyclonal
Immunogen:	Recombinant Human Solute carrier family 22 member 25 protein (31-145AA)
Formulation:	Preservative: 0.03% Proclin 300 Constituents: 50% Glycerol, 0.01M PBS, pH 7.4
Concentration:	lot specific
Purification:	>95%, Protein G purified
Conjugation:	Unconjugated
Storage:	Upon receipt, store at –20°C or –80°C. Avoid repeated freeze.
Stability:	1 year from dispatch.
Database Link:	Q6T423
Background:	integral component of plasma membrane, inorganic anion exchanger activity, sodium-independent organic anion transmembrane transporter activity, urate transmembrane transporter activity, sodium-independent organic anion transport, urate transport

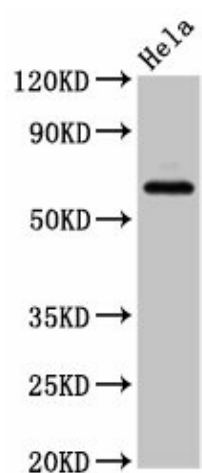


Product images:

IHC image of TA388476 diluted at 1:300 and staining in paraffin-embedded human liver cancer performed on a Leica Bond™ system. After dewaxing and hydration, antigen retrieval was mediated by high pressure in a citrate buffer (pH 6.0). Section was blocked with 10% normal goat serum 30min at RT. Then primary antibody (1% BSA) was incubated at 4°C overnight. The primary is detected by a biotinylated secondary antibody and visualized using an HRP conjugated SP system.



Immunofluorescence staining of HepG2 cells with TA388476 at 1:100, counter-stained with DAPI. The cells were fixed in 4% formaldehyde, permeabilized using 0.2% Triton X-100 and blocked in 10% normal Goat Serum. The cells were then incubated with the antibody overnight at 4°C. The secondary antibody was Alexa Fluor 488-conjugated AffiniPure Goat Anti-Rabbit IgG(H+L).



Western Blot

Positive WB detected in: HeLa whole cell lysate

All lanes: SLC22A25 antibody at 6.8 μ g/ml

Secondary

Goat polyclonal to rabbit IgG at 1/50000
dilution

Predicted band size: 62 kDa

Observed band size: 62 kDa