

## Product datasheet for **TA388474**

### **C16orf87 Rabbit Polyclonal Antibody**

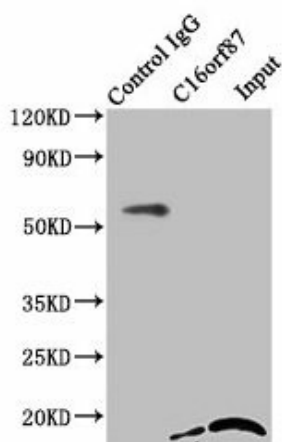
#### **Product data:**

Product Type:	Primary Antibodies
Applications:	IP, WB
Recommended Dilution:	Recommended dilution: WB:1:1000-1:5000, IP:1:200-1:2000
Reactivity:	Human
Host:	Rabbit
Isotype:	IgG
Clonality:	Polyclonal
Immunogen:	Recombinant Human UPF0547 protein C16orf87 protein (1-154AA)
Formulation:	Preservative: 0.03% Proclin 300 Constituents: 50% Glycerol, 0.01M PBS, PH 7.4
Concentration:	lot specific
Purification:	>95%, Protein G purified
Conjugation:	Unconjugated
Storage:	Upon receipt, store at -20°C or -80°C. Avoid repeated freeze.
Stability:	1 year from dispatch.
Database Link:	<a href="#">Q6PH81</a>



[View online »](#)

## Product images:

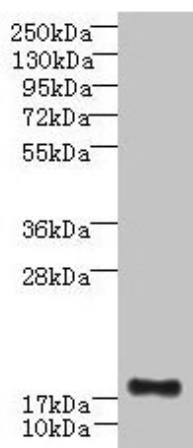


Immunoprecipitating C16orf87 in HepG2 whole cell lysate

Lane 1: Rabbit control IgG instead of TA388474 in HepG2 whole cell lysate. For western blotting, a HRP-conjugated Protein G antibody was used as the secondary antibody (1/2000)

Lane 2: TA388474 (8 $\mu$ g) + HepG2 whole cell lysate (500 $\mu$ g)

Lane 3: HepG2 whole cell lysate (10 $\mu$ g)



Western blot

All lanes: C16orf87 antibody at 3 $\mu$ g/ml + HepG2 whole cell lysate

Secondary

Goat polyclonal to rabbit IgG at 1/10000 dilution

Predicted band size: 18, 11 kDa

Observed band size: 18 kDa