

## Product datasheet for **TA388471**

### **TTC27 Rabbit Polyclonal Antibody**

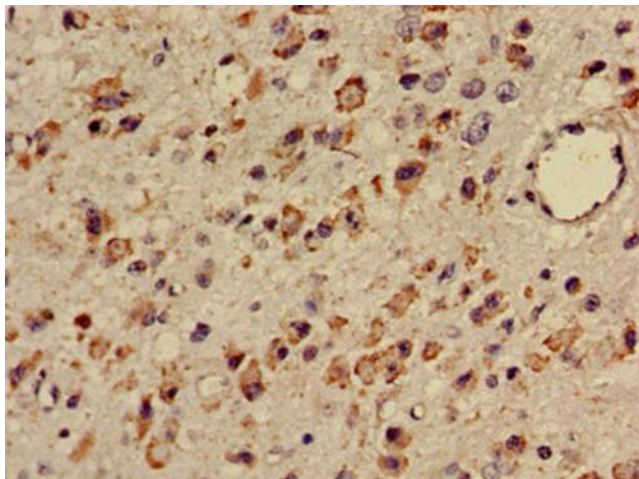
#### **Product data:**

Product Type:	Primary Antibodies
Applications:	IHC, WB
Recommended Dilution:	Recommended dilution: WB:1:500-1:5000, IHC:1:20-1:200
Reactivity:	Human
Host:	Rabbit
Isotype:	IgG
Clonality:	Polyclonal
Immunogen:	Recombinant Human Tetratricopeptide repeat protein 27 protein (590-817AA)
Formulation:	Preservative: 0.03% Proclin 300 Constituents: 50% Glycerol, 0.01M PBS, pH 7.4
Concentration:	lot specific
Purification:	>95%, Protein G purified
Conjugation:	Unconjugated
Storage:	Upon receipt, store at -20°C or -80°C. Avoid repeated freeze.
Stability:	1 year from dispatch.
Database Link:	<a href="#">Q6P3X3</a>

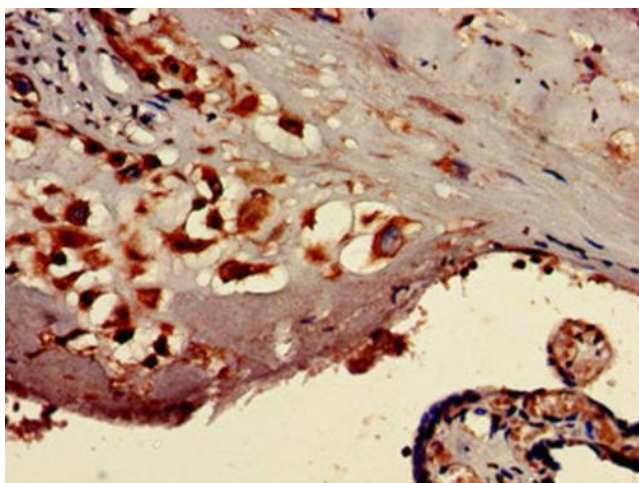


[View online »](#)

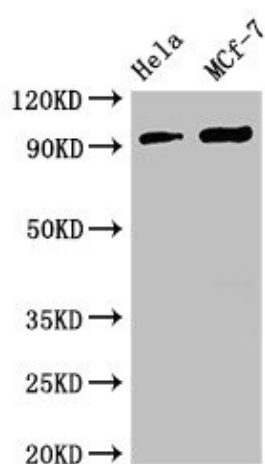
**Product images:**



Immunohistochemistry of paraffin-embedded human glioma using TA388471 at dilution of 1:100



Immunohistochemistry of paraffin-embedded human placenta tissue using TA388471 at dilution of 1:100



Western Blot

Positive WB detected in: Hela whole cell lysate,  
MCF-7 whole cell lysate

All lanes: TTC27 antibody at 2.7µg/ml

Secondary

Goat polyclonal to rabbit IgG at 1/50000 dilution

Predicted band size: 97 kDa

Observed band size: 97 kDa