

## Product datasheet for **TA388470**

### **XRRA1 Rabbit Polyclonal Antibody**

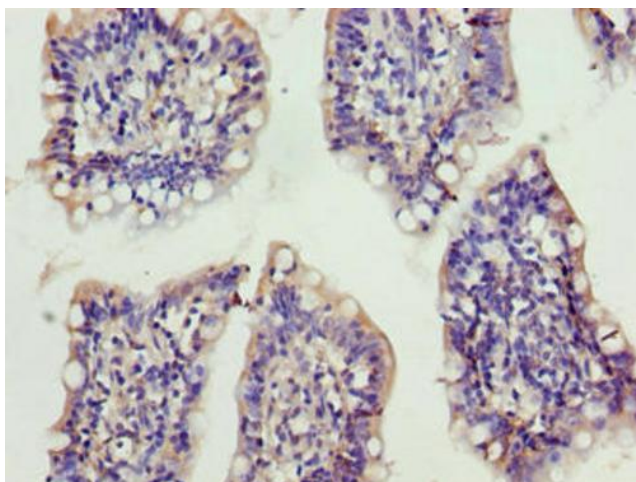
#### **Product data:**

Product Type:	Primary Antibodies
Applications:	IHC, WB
Recommended Dilution:	Recommended dilution: WB:1:1000-1:5000, IHC:1:20-1:200
Reactivity:	Mouse, Human
Host:	Rabbit
Isotype:	IgG
Clonality:	Polyclonal
Immunogen:	Recombinant Human X-ray radiation resistance-associated protein 1 protein (101-400AA)
Formulation:	Preservative: 0.03% Proclin 300 Constituents: 50% Glycerol, 0.01M PBS, PH 7.4
Concentration:	lot specific
Purification:	>95%, Protein G purified
Conjugation:	Unconjugated
Storage:	Upon receipt, store at -20°C or -80°C. Avoid repeated freeze.
Stability:	1 year from dispatch.
Database Link:	<a href="#">Q6P2D8</a>
Background:	May be involved in the response of cells to X-ray radiation.

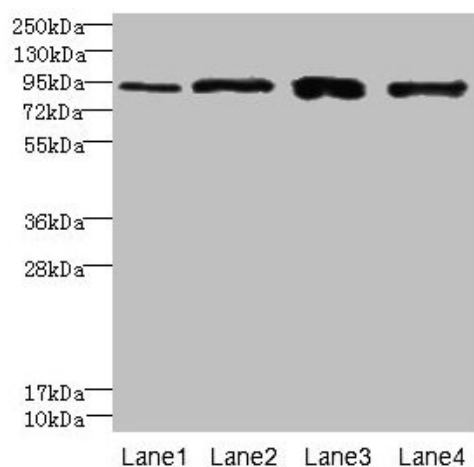


[View online »](#)

## Product images:



Immunohistochemistry of paraffin-embedded human small intestine tissue using TA388470 at dilution of 1:100



Western blot  
All lanes: XRRA1 antibody at 6 $\mu$ g/ml  
Lane 1: HepG2 whole cell lysate  
Lane 2: Mouse kidney tissue  
Lane 3: HL60 whole cell lysate  
Lane 4: U251 whole cell lysate  
Secondary  
Goat polyclonal to rabbit IgG at 1/10000 dilution  
Predicted band size: 90, 68, 89, 84, 59 kDa  
Observed band size: 90 kDa