

Product datasheet for **TA388469M**

NANOGP8 Rabbit Polyclonal Antibody

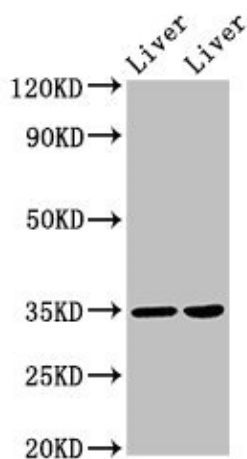
Product data:

| | |
|-----------------------|--|
| Product Type: | Primary Antibodies |
| Applications: | WB |
| Recommended Dilution: | Recommended dilution: WB:1:500-1:2000 |
| Reactivity: | Mouse, Rat, Human |
| Host: | Rabbit |
| Isotype: | IgG |
| Clonality: | Polyclonal |
| Immunogen: | Recombinant Human Homeobox protein NANOGP8 protein (1-305AA) |
| Formulation: | Preservative: 0.03% Proclin 300 Constituents: 50% Glycerol, 0.01M PBS, PH 7.4 |
| Concentration: | lot specific |
| Purification: | >95%, Protein G purified |
| Conjugation: | Unconjugated |
| Storage: | Upon receipt, store at -20°C or -80°C. Avoid repeated freeze. |
| Stability: | 1 year from dispatch. |
| Database Link: | Q6NSW7 |
| Background: | May act as a transcription regulator. When overexpressed, promotes entry of cells into S phase and cell proliferation. |



[View online »](#)

Product images:



Western Blot
 Positive WB detected in: Rat liver tissue, Mouse liver tissue
 All lanes: NANOGP8 antibody at 2 μ g/ml
 Secondary
 Goat polyclonal to rabbit IgG at 1/50000 dilution
 Predicted band size: 35 kDa
 Observed band size: 35 kDa