

Product datasheet for **TA388456M**

RARS2 Rabbit Polyclonal Antibody

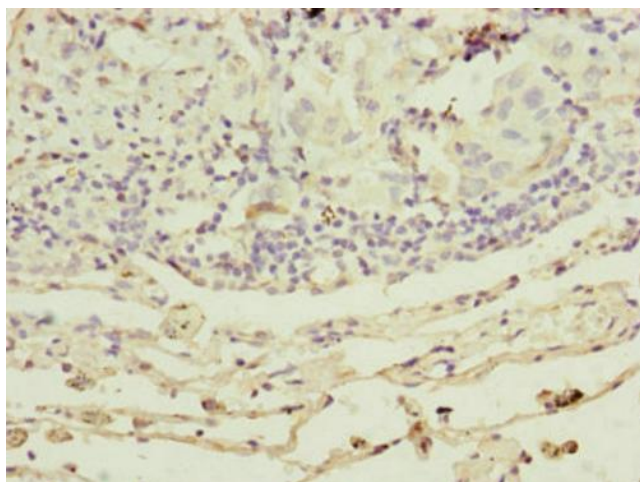
Product data:

Product Type:	Primary Antibodies
Applications:	IHC, WB
Recommended Dilution:	Recommended dilution: WB:1:1000-1:5000, IHC:1:20-1:200
Reactivity:	Mouse, Human
Host:	Rabbit
Isotype:	IgG
Clonality:	Polyclonal
Immunogen:	Recombinant Human Probable arginine--tRNA ligase, mitochondrial protein (17-340AA)
Formulation:	PBS with 0.02% sodium azide, 50% glycerol, pH7.3.
Concentration:	lot specific
Purification:	Antigen Affinity Purified
Conjugation:	Unconjugated
Storage:	Upon receipt, store at -20°C or -80°C. Avoid repeated freeze.
Stability:	1 year from dispatch.
Database Link:	<u>Q5T160</u>
Background:	mitochondrial matrix, mitochondrion, arginine-tRNA ligase activity, poly(A) RNA binding, arginyl-tRNA aminoacylation, mitochondrial translation, tRNA aminoacylation for protein translation

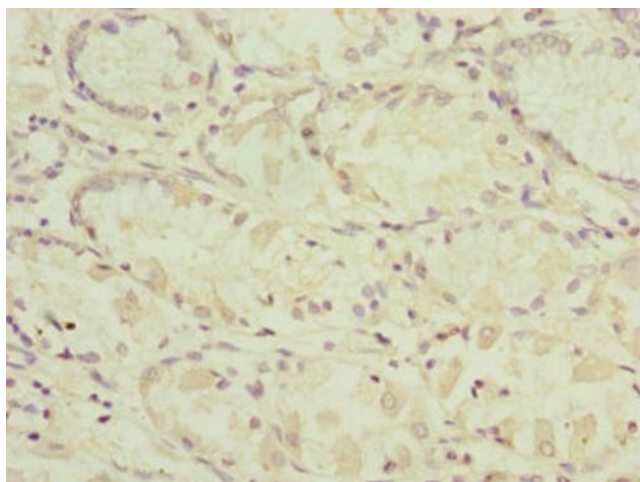


[View online »](#)

Product images:



Immunohistochemistry of paraffin-embedded human lung cancer using [TA388456] at dilution of 1:100



Immunohistochemistry of paraffin-embedded human gastric cancer using [TA388456] at dilution of 1:100



Western blot

All lanes: RARS2 antibody at 2.68 µg/ml

Lane 1: Mouse kidney tissue

Lane 2: HL60 whole cell lysate

Secondary

Goat polyclonal to rabbit IgG at 1/10000 dilution

Predicted band size: 66 kDa

Observed band size: 66 kDa