

## Product datasheet for **TA388453**

### FIGN Rabbit Polyclonal Antibody

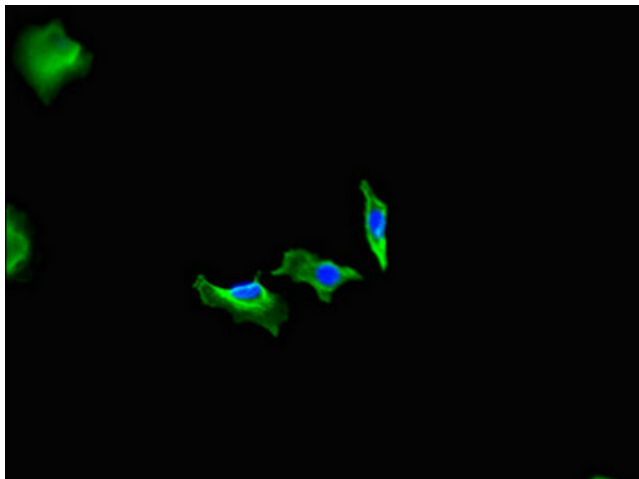
#### Product data:

Product Type:	Primary Antibodies
Applications:	IF, IHC, WB
Recommended Dilution:	Recommended dilution: WB:1:2000-1:5000, IHC:1:20-1:200, IF:1:50-1:200
Reactivity:	Mouse, Human
Host:	Rabbit
Isotype:	IgG
Clonality:	Polyclonal
Immunogen:	Recombinant Human Fidgetin protein (132-371AA)
Formulation:	Preservative: 0.03% Proclin 300 Constituents: 50% Glycerol, 0.01M PBS, PH 7.4
Concentration:	lot specific
Purification:	>95%, Protein G purified
Conjugation:	Unconjugated
Storage:	Upon receipt, store at -20°C or -80°C. Avoid repeated freeze.
Stability:	1 year from dispatch.
Database Link:	<a href="#">Q5HY92</a>
Background:	ATP-dependent microtubule severing protein. Severs microtubules along their length and depolymerizes their ends, primarily the minus-end, that may lead to the suppression of microtubule growth from and attachment to centrosomes. Microtubule severing may promote rapid reorganization of cellular microtubule arrays and the release of microtubules from the centrosome following nucleation. Microtubule release from the mitotic spindle poles may allow depolymerization of the microtubule end proximal to the spindle pole, leading to poleward microtubule flux and poleward motion of chromosome.

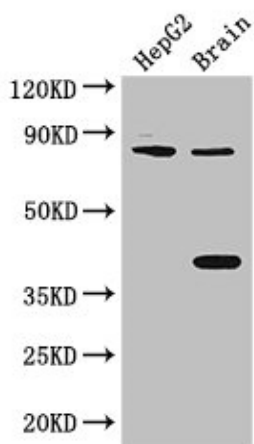


[View online »](#)

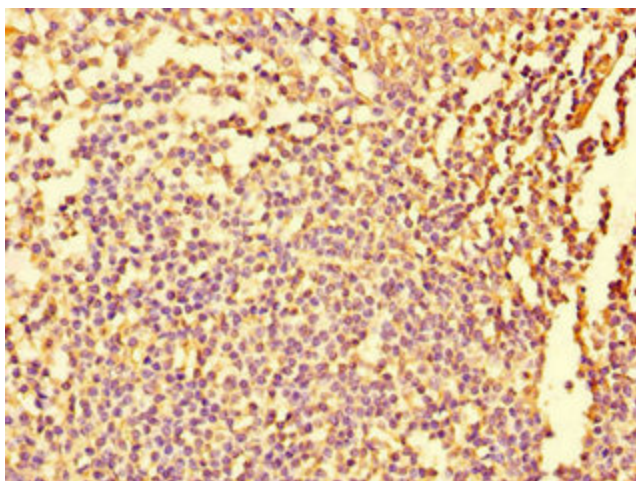
## Product images:



Immunofluorescent analysis of HeLa cells using TA388453 at dilution of 1:100 and Alexa Fluor 488-conjugated AffiniPure Goat Anti-Rabbit IgG(H+L)



Western Blot  
Positive WB detected in: HepG2 whole cell lysate, Mouse brain tissue  
All lanes: FIGN antibody at 3µg/ml  
Secondary  
Goat polyclonal to rabbit IgG at 1/50000 dilution  
Predicted band size: 83 kDa  
Observed band size: 83, 38 kDa



Immunohistochemistry of paraffin-embedded human tonsil tissue using TA388453 at dilution of 1:100