

Product datasheet for **TA388447M**

LEXM Rabbit Polyclonal Antibody

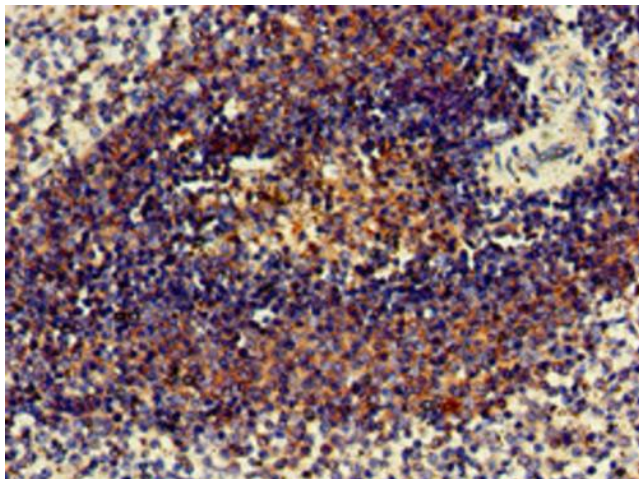
Product data:

Product Type:	Primary Antibodies
Applications:	IHC, WB
Recommended Dilution:	Recommended dilution: WB:1:500-1:5000, IHC:1:20-1:200
Reactivity:	Rat, Human
Host:	Rabbit
Isotype:	IgG
Clonality:	Polyclonal
Immunogen:	Recombinant Human Lymphocyte expansion molecule protein (1-418AA)
Formulation:	Preservative: 0.03% Proclin 300 Constituents: 50% Glycerol, 0.01M PBS, pH 7.4
Concentration:	lot specific
Purification:	>95%, Protein G purified
Conjugation:	Unconjugated
Storage:	Upon receipt, store at -20°C or -80°C. Avoid repeated freeze.
Stability:	1 year from dispatch.
Database Link:	Q3ZCV2
Background:	May have on role on T-cell metabolism however these data are controversial.

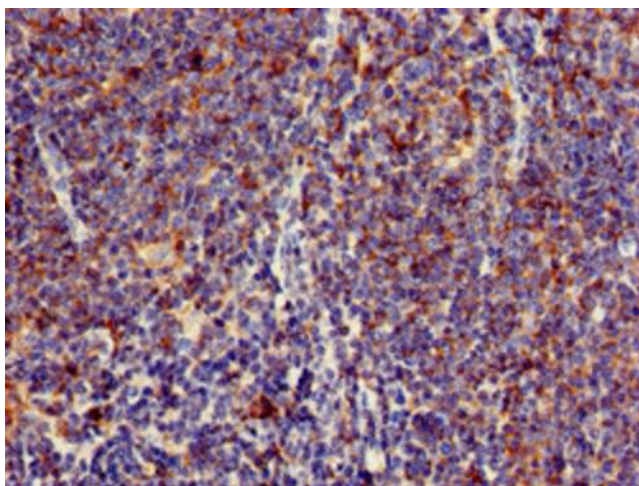


[View online »](#)

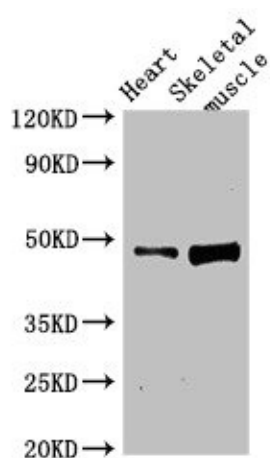
Product images:



Immunohistochemistry of paraffin-embedded human spleen tissue using [TA388447] at dilution of 1:100



Immunohistochemistry of paraffin-embedded human lymph node tissue using [TA388447] at dilution of 1:100



Western Blot

Positive WB detected in: Rat heart tissue, Rat skeletal muscle tissue

All lanes: LEXM antibody at 4 μ g/ml

Secondary

Goat polyclonal to rabbit IgG at 1/50000 dilution

Predicted band size: 48 kDa

Observed band size: 48 kDa