

Product datasheet for **TA388445**

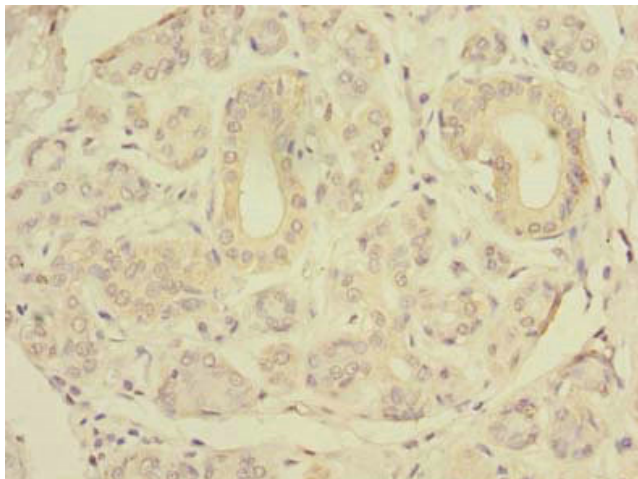
SLC4A8 Rabbit Polyclonal Antibody

Product data:

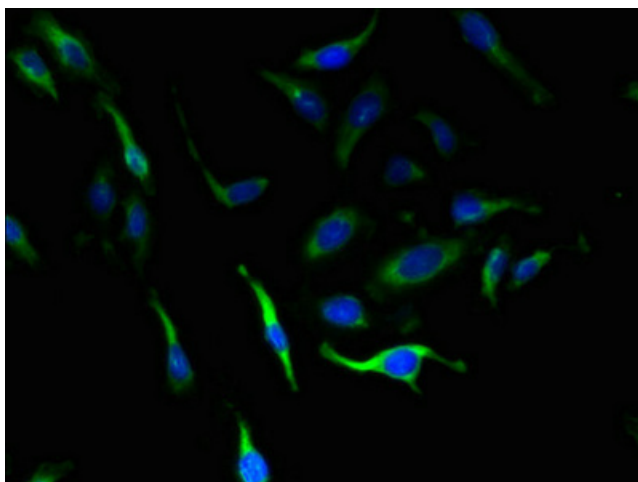
Product Type:	Primary Antibodies
Applications:	IF, IHC, WB
Recommended Dilution:	Recommended dilution: WB:1:500-1:2000, IHC:1:20-1:200, IF:1:50-1:200
Reactivity:	Human
Host:	Rabbit
Isotype:	IgG
Clonality:	Polyclonal
Immunogen:	Recombinant Human Electroneutral sodium bicarbonate exchanger 1 protein (1-300AA)
Formulation:	Preservative: 0.03% Proclin 300 Constituents: 50% Glycerol, 0.01M PBS, PH 7.4
Concentration:	lot specific
Purification:	Antigen Affinity Purified
Conjugation:	Unconjugated
Storage:	Upon receipt, store at -20°C or -80°C. Avoid repeated freeze.
Stability:	1 year from dispatch.
Database Link:	Q2Y0W8
Background:	Mediates electroneutral sodium- and carbonate-dependent chloride-HCO ₃ ⁻ exchange with a Na ⁽⁺⁾ :HCO ₃ ⁽⁻⁾ stoichiometry of 2:1. Plays a major role in pH regulation in neurons. May be involved in cell pH regulation by transporting HCO ₃ ⁽⁻⁾ from blood to cell. Enhanced expression in severe acid stress could be important for cell survival by mediating the influx of HCO ₃ ⁽⁻⁾ into the cells. Also mediates lithium-dependent HCO ₃ ⁽⁻⁾ cotransport. May be regulated by osmolarity.



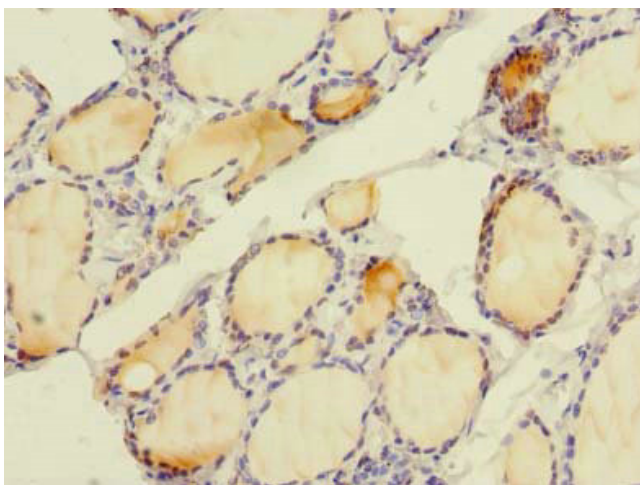
[View online »](#)

Product images:

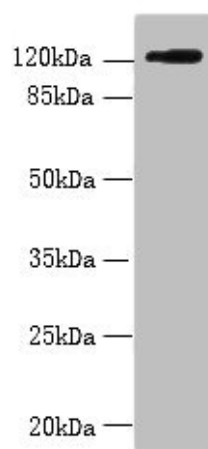
Immunohistochemistry of paraffin-embedded human salivary gland tissue using TA388445 at dilution of 1:100



Immunofluorescent analysis of HeLa cells using TA388445 at dilution of 1:100 and Alexa Fluor 488-conjugated AffiniPure Goat Anti-Rabbit IgG(H+L)



Immunohistochemistry of paraffin-embedded human thyroid tissue using TA388445 at dilution of 1:100



Western blot
All lanes: SLC4A8 antibody at 2 μ g/ml + HeLa whole cell lysate
Secondary
Goat polyclonal to rabbit IgG at 1/10000 dilution
Predicted band size: 123, 121, 118, 112, 78, 84, 72 kDa
Observed band size: 123 kDa