

Product datasheet for **TA388444M**

KIZ Rabbit Polyclonal Antibody

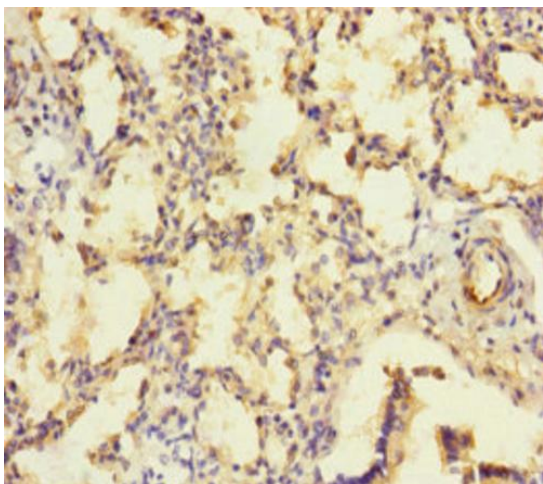
Product data:

Product Type:	Primary Antibodies
Applications:	IHC, WB
Recommended Dilution:	Recommended dilution: WB:1:1000-1:5000, IHC:1:20-1:200
Reactivity:	Human
Host:	Rabbit
Isotype:	IgG
Clonality:	Polyclonal
Immunogen:	Recombinant Human Centrosomal protein kizuna protein (1-240AA)
Formulation:	PBS with 0.02% sodium azide, 50% glycerol, pH7.3.
Concentration:	lot specific
Purification:	Antigen Affinity Purified
Conjugation:	Unconjugated
Storage:	Upon receipt, store at -20°C or -80°C. Avoid repeated freeze.
Stability:	1 year from dispatch.
Database Link:	Q2M2Z5
Background:	Centrosomal protein required for establishing a robust mitotic centrosome architecture that can endure the forces that converge on the centrosomes during spindle formation. Required for stabilizing the expanded pericentriolar material around the centriole.

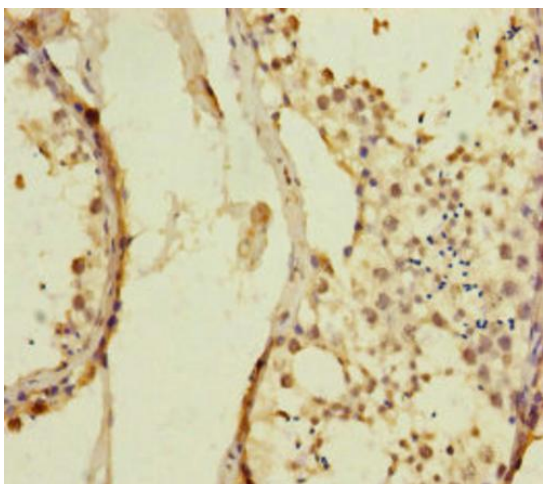


[View online »](#)

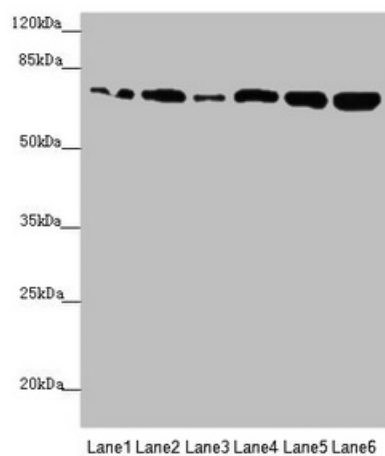
Product images:



Immunohistochemistry of paraffin-embedded human lung tissue using [TA388444] at dilution of 1:100



Immunohistochemistry of paraffin-embedded human testis tissue using [TA388444] at dilution of 1:100



Western blot

All lanes: KIZ antibody at 2.89µg/ml

Lane 1: HepG2 whole cell lysate

Lane 2: A549 whole cell lysate

Lane 3: CEM whole cell lysate

Lane 4: Hela whole cell lysate

Lane 5: Jurkat whole cell lysate

Lane 6: 293T whole cell lysate

Secondary

Goat polyclonal to rabbit IgG at 1/10000 dilution

Predicted band size: 76, 63, 70, 74, 60 kDa

Observed band size: 76 kDa