

Product datasheet for **TA388442M**

IZUMO4 Rabbit Polyclonal Antibody

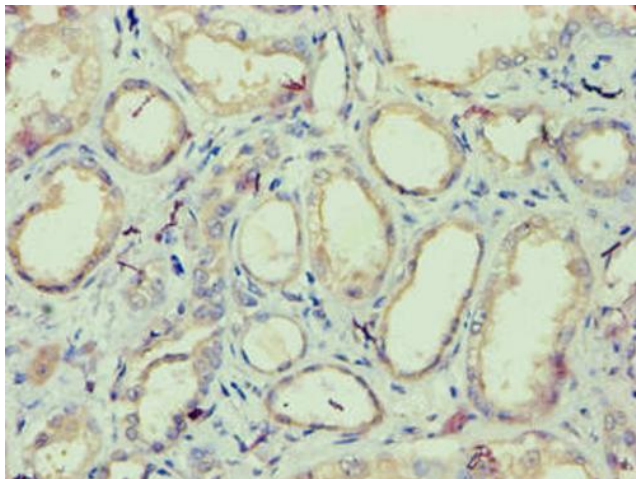
Product data:

Product Type:	Primary Antibodies
Applications:	IF, IHC, WB
Recommended Dilution:	Recommended dilution: WB:1:500-1:5000, IHC:1:20-1:200, IF:1:50-1:200
Reactivity:	Rat, Human
Host:	Rabbit
Isotype:	IgG
Clonality:	Polyclonal
Immunogen:	Recombinant Human Izumo sperm-egg fusion protein 4 protein (16-214AA)
Formulation:	Preservative: 0.03% Proclin 300 Constituents: 50% Glycerol, 0.01M PBS, PH 7.4
Concentration:	lot specific
Purification:	>95%, Protein G purified
Conjugation:	Unconjugated
Storage:	Upon receipt, store at -20°C or -80°C. Avoid repeated freeze.
Stability:	1 year from dispatch.
Database Link:	Q1ZYL8

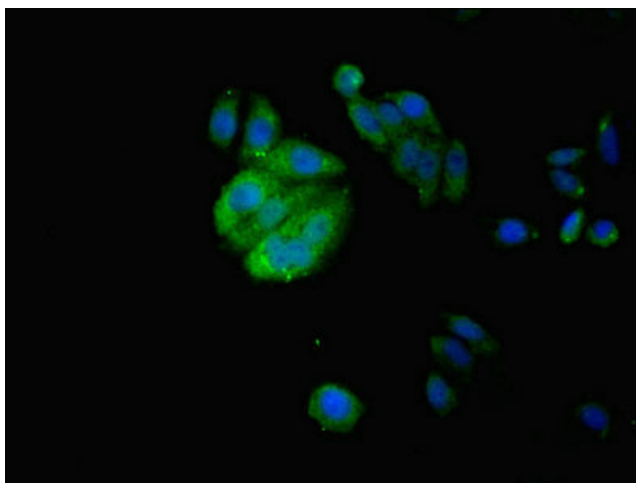


[View online »](#)

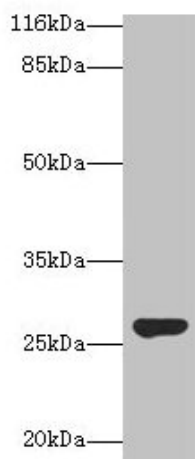
Product images:



Immunohistochemistry of paraffin-embedded human kidney tissue using [TA388442] at dilution of 1:100



Immunofluorescent analysis of HepG2 cells using [TA388442] at dilution of 1:100 and Alexa Fluor 488-conjugated AffiniPure Goat Anti-Rabbit IgG(H+L)



Western blot

All lanes: IZUMO4 antibody at 2 μ g/ml + Rat gonadal tissue

Secondary

Goat polyclonal to rabbit IgG at 1/10000 dilution

Predicted band size: 27, 25, 18, 19 kDa

Observed band size: 27 kDa