

Product datasheet for **TA388441M**

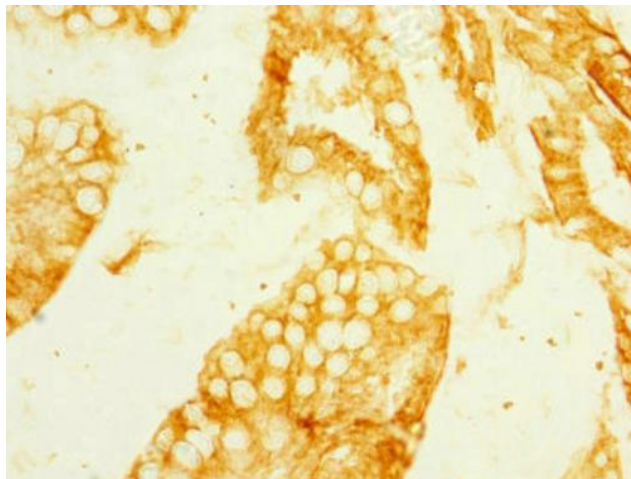
MEP1B Rabbit Polyclonal Antibody

Product data:

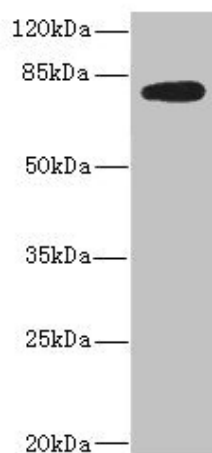
Product Type:	Primary Antibodies
Applications:	IHC, WB
Recommended Dilution:	Recommended dilution: WB:1:1000-1:5000, IHC:1:20-1:200
Reactivity:	Mouse, Human
Host:	Rabbit
Isotype:	IgG
Clonality:	Polyclonal
Immunogen:	Recombinant Human Meprin A subunit beta protein (480-652AA)
Formulation:	PBS with 0.02% sodium azide, 50% glycerol, pH7.3.
Concentration:	lot specific
Purification:	Antigen Affinity Purified
Conjugation:	Unconjugated
Storage:	Upon receipt, store at -20°C or -80°C. Avoid repeated freeze.
Stability:	1 year from dispatch.
Database Link:	Q16820
Background:	Membrane metallopeptidase that sheds many membrane-bound proteins. Exhibits a strong preference for acidic amino acids at the P1' position. Known substrates include: FGF19, VGFA, IL1B, IL18, procollagen I and III, E-cadherin, KLK7, gastrin, ADAM10, tenascin-C. The presence of several pro-inflammatory cytokine among substrates implicate MEP1B in inflammation. It is also involved in tissue remodeling due to its capability to degrade extracellular matrix components.

[View online »](#)

Product images:



Immunohistochemistry of paraffin-embedded human small intestine tissue using [TA388441] at dilution of 1:100



Western blot
All lanes: MEP1B antibody IgG at 2.36µg/ml +
Mouse kidney tissue
Secondary
Goat polyclonal to rabbit IgG at 1/10000 dilution
Predicted band size: 80 kDa
Observed band size: 80 kDa