

Product datasheet for **TA388440M**

QPCT Rabbit Polyclonal Antibody

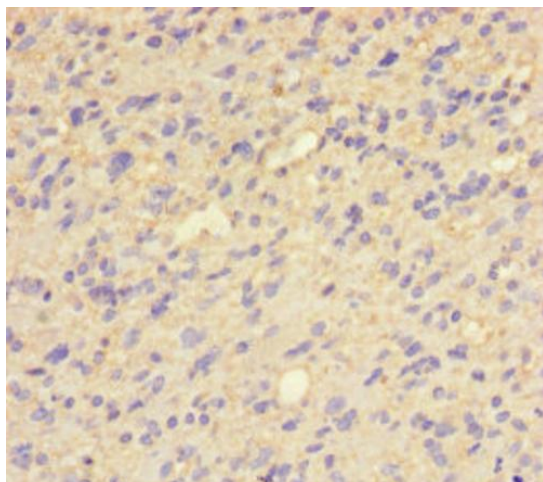
Product data:

Product Type:	Primary Antibodies
Applications:	IHC, WB
Recommended Dilution:	Recommended dilution: WB:1:1000-1:5000, IHC:1:20-1:200
Reactivity:	Rat, Human
Host:	Rabbit
Isotype:	IgG
Clonality:	Polyclonal
Immunogen:	Recombinant Human Glutaminyl-peptide cyclotransferase protein (29-361AA)
Formulation:	Preservative: 0.03% Proclin 300 Constituents: 50% Glycerol, 0.01M PBS, PH 7.4
Concentration:	lot specific
Purification:	>95%, Protein G purified
Conjugation:	Unconjugated
Storage:	Upon receipt, store at -20°C or -80°C. Avoid repeated freeze.
Stability:	1 year from dispatch.
Database Link:	Q16769
Background:	Responsible for the biosynthesis of pyroglutamyl peptides. Has a bias against acidic and tryptophan residues adjacent to the N-terminal glutaminyl residue and a lack of importance of chain length after the second residue. Also catalyzes N-terminal pyroglutamate formation. In vitro, catalyzes pyroglutamate formation of N-terminally truncated form of APP amyloid-beta peptides [Glu-3]-beta-amyloid. May be involved in the N-terminal pyroglutamate formation of several amyloid-related plaque-forming peptides.

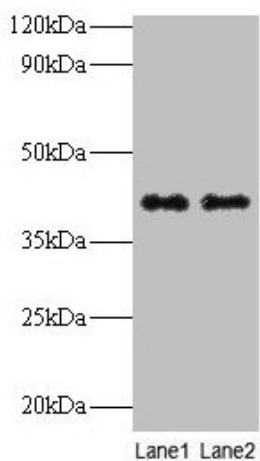


[View online »](#)

Product images:



Immunohistochemistry of paraffin-embedded human glioma using [TA388440] at dilution of 1:100



Western blot
All lanes: QPCT antibody at 2µg/ml
Lane 1: Rat muscle tissue
Lane 2: Rat adrenal gland tissue
Secondary
Goat polyclonal to rabbit IgG at 1/10000 dilution
Predicted band size: 41, 36 kDa
Observed band size: 41 kDa