

Product datasheet for **TA388439**

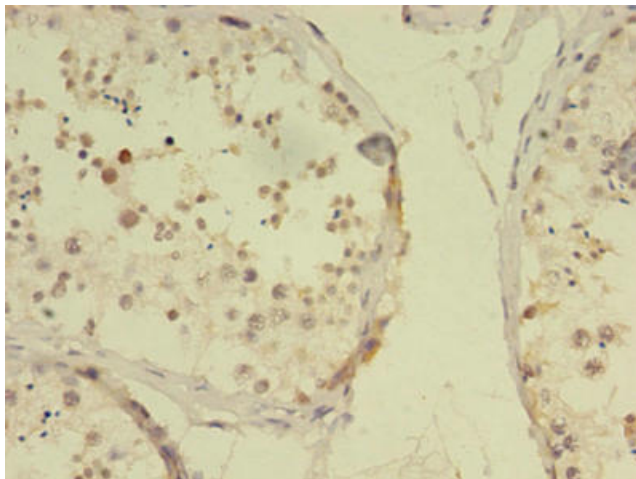
RBMY1F Rabbit Polyclonal Antibody

Product data:

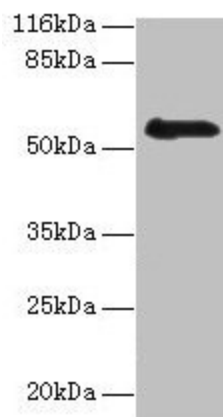
Product Type:	Primary Antibodies
Applications:	IHC, WB
Recommended Dilution:	Recommended dilution: WB:1:500-1:2000, IHC:1:20-1:200
Reactivity:	Human
Host:	Rabbit
Isotype:	IgG
Clonality:	Polyclonal
Immunogen:	Recombinant Human RNA-binding motif protein, Y chromosome, family 1 member F/J protein (1-496AA)
Formulation:	Preservative: 0.03% Proclin 300 Constituents: 50% Glycerol, 0.01M PBS, PH 7.4
Concentration:	lot specific
Purification:	>95%, Protein G purified
Conjugation:	Unconjugated
Storage:	Upon receipt, store at -20°C or -80°C. Avoid repeated freeze.
Stability:	1 year from dispatch.
Database Link:	Q15415
Background:	RNA-binding protein which may be involved in spermatogenesis. Required for sperm development, possibly by participating in pre-mRNA splicing in the testis.



[View online »](#)

Product images:

Immunohistochemistry of paraffin-embedded human testis tissue using TA388439 at dilution of 1:100



Western blot
All lanes: RBMY1F antibody at 2 μ g/ml + PC-3 whole cell lysate
Secondary
Goat polyclonal to rabbit IgG at 1/10000 dilution
Predicted band size: 56, 48 kDa
Observed band size: 56 kDa