

## Product datasheet for **TA388436M**

### **KRT33B Rabbit Polyclonal Antibody**

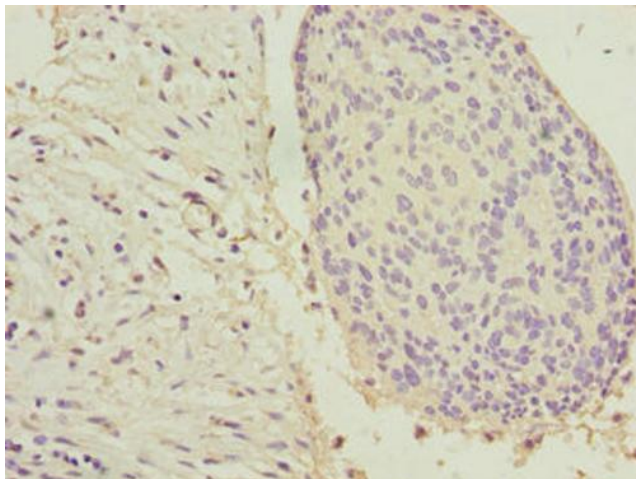
#### **Product data:**

Product Type:	Primary Antibodies
Applications:	IHC, WB
Recommended Dilution:	Recommended dilution: WB:1:500-1:2000, IHC:1:20-1:200
Reactivity:	Human
Host:	Rabbit
Isotype:	IgG
Clonality:	Polyclonal
Immunogen:	Recombinant Human Keratin, type I cuticular Ha3-II protein (1-404AA)
Formulation:	Preservative: 0.03% Proclin 300 Constituents: 50% Glycerol, 0.01M PBS, PH 7.4
Concentration:	lot specific
Purification:	Antigen Affinity Purified
Conjugation:	Unconjugated
Storage:	Upon receipt, store at -20°C or -80°C. Avoid repeated freeze.
Stability:	1 year from dispatch.
Database Link:	<a href="#">Q14525</a>
Background:	There are two types of hair/microfibrillar keratin, I (acidic) and II (neutral to basic).

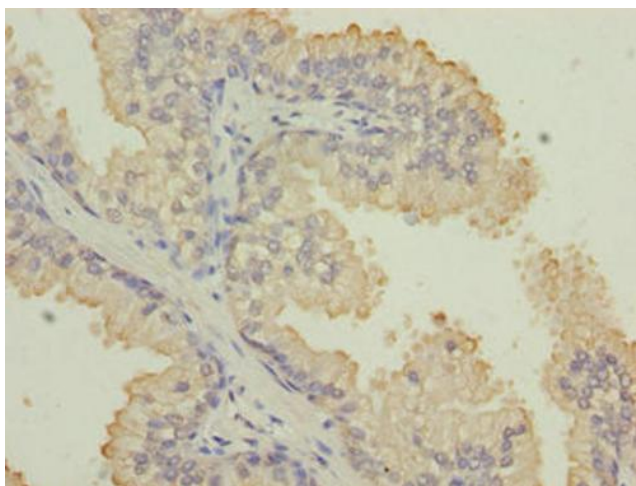


[View online »](#)

## Product images:



Immunohistochemistry of paraffin-embedded human cervical cancer using [TA388436] at dilution of 1:100



Immunohistochemistry of paraffin-embedded human prostate cancer using [TA388436] at dilution of 1:100



Western blot

All lanes: KRT33B antibody at 1 $\mu$ g/ml + MCF-7 whole cell lysate

Secondary

Goat polyclonal to rabbit IgG at 1/10000 dilution

Predicted band size: 47 kDa

Observed band size: 47 kDa