

Product datasheet for **TA388436**

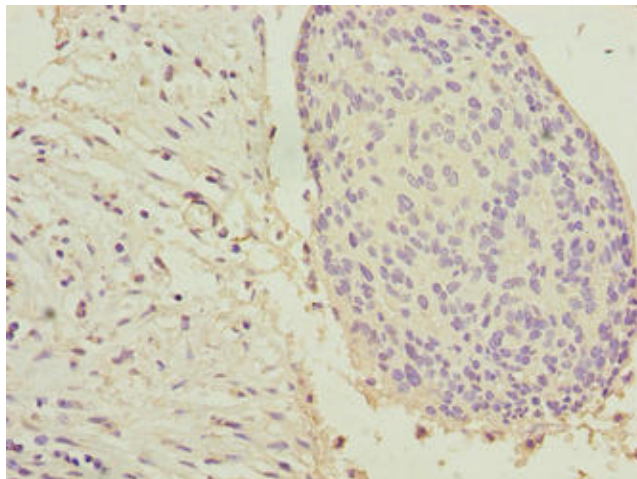
KRT33B Rabbit Polyclonal Antibody

Product data:

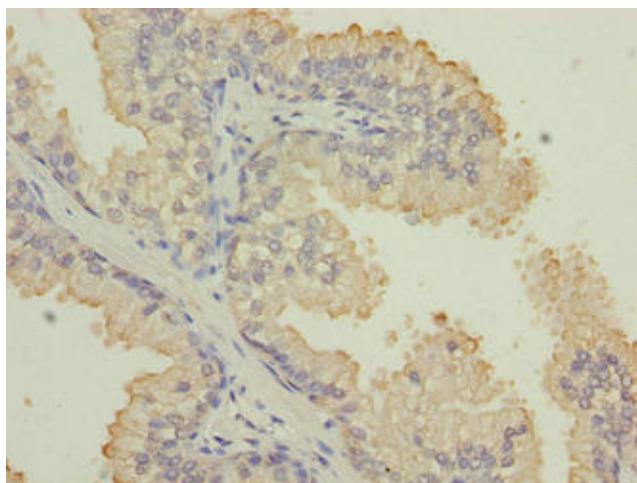
Product Type:	Primary Antibodies
Applications:	IHC, WB
Recommended Dilution:	Recommended dilution: WB:1:500-1:2000, IHC:1:20-1:200
Reactivity:	Human
Host:	Rabbit
Isotype:	IgG
Clonality:	Polyclonal
Immunogen:	Recombinant Human Keratin, type I cuticular Ha3-II protein (1-404AA)
Formulation:	Preservative: 0.03% Proclin 300 Constituents: 50% Glycerol, 0.01M PBS, PH 7.4
Concentration:	lot specific
Purification:	Antigen Affinity Purified
Conjugation:	Unconjugated
Storage:	Upon receipt, store at -20°C or -80°C. Avoid repeated freeze.
Stability:	1 year from dispatch.
Database Link:	Q14525
Background:	There are two types of hair/microfibrillar keratin, I (acidic) and II (neutral to basic).



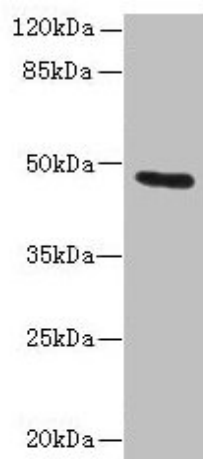
[View online »](#)

Product images:

Immunohistochemistry of paraffin-embedded human cervical cancer using TA388436 at dilution of 1:100



Immunohistochemistry of paraffin-embedded human prostate cancer using TA388436 at dilution of 1:100



Western blot

All lanes: KRT33B antibody at 1 μ g/ml + MCF-7 whole cell lysate

Secondary

Goat polyclonal to rabbit IgG at 1/10000 dilution

Predicted band size: 47 kDa

Observed band size: 47 kDa