

Product datasheet for **TA388434M**

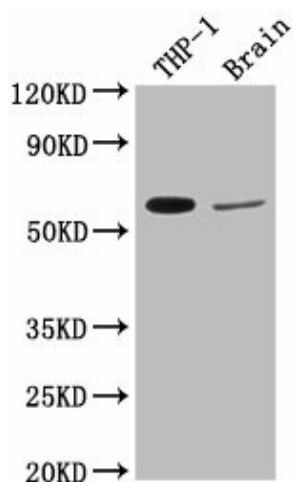
COL9A2 Rabbit Polyclonal Antibody

Product data:

Product Type:	Primary Antibodies
Applications:	WB
Recommended Dilution:	Recommended dilution: WB:1:1000-1:5000
Reactivity:	Rat, Human
Host:	Rabbit
Isotype:	IgG
Clonality:	Polyclonal
Immunogen:	Peptide sequence from Human Collagen alpha-2(IX) chain protein (594-611AA)
Formulation:	Preservative: 0.03% Proclin 300 Constituents: 50% Glycerol, 0.01M PBS, pH 7.4
Concentration:	lot specific
Purification:	Antigen Affinity Purified
Conjugation:	Unconjugated
Storage:	Upon receipt, store at -20°C or -80°C. Avoid repeated freeze.
Stability:	1 year from dispatch.
Database Link:	Q14055
Background:	Structural component of hyaline cartilage and vitreous of the eye.



[View online »](#)

Product images:


Western Blot
 Positive WB detected in: THP-1 whole cell lysate,
 Rat brain tissue
 All lanes: COL9A2 antibody at 1:2000
 Secondary
 Goat polyclonal to rabbit IgG at 1/50000 dilution
 Predicted band size: 66 kDa
 Observed band size: 66 kDa