

Product datasheet for **TA388432M**

MAB21L1 Rabbit Polyclonal Antibody

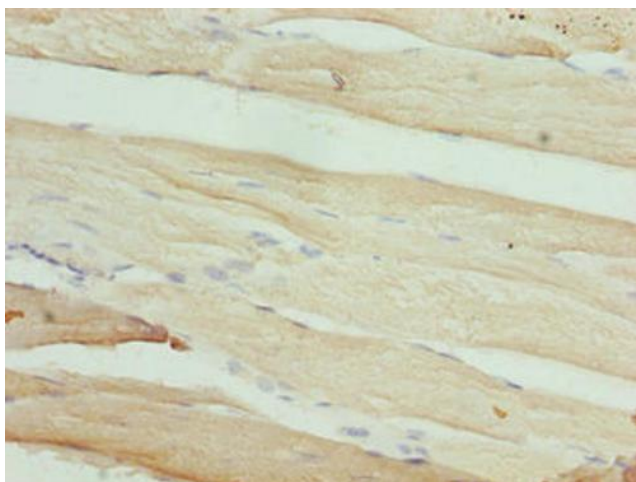
Product data:

Product Type:	Primary Antibodies
Applications:	IHC, WB
Recommended Dilution:	Recommended dilution: WB:1:1000-1:5000, IHC:1:20-1:200
Reactivity:	Human
Host:	Rabbit
Isotype:	IgG
Clonality:	Polyclonal
Immunogen:	Recombinant Human Putative nucleotidyltransferase MAB21L1 protein (1-359AA)
Formulation:	Preservative: 0.03% Proclin 300 Constituents: 50% Glycerol, 0.01M PBS, PH 7.4
Concentration:	lot specific
Purification:	>95%, Protein G purified
Conjugation:	Unconjugated
Storage:	Upon receipt, store at -20°C or -80°C. Avoid repeated freeze.
Stability:	1 year from dispatch.
Database Link:	Q13394
Background:	Putative nucleotidyltransferase required for several aspects of embryonic development including normal development of the eye (By similarity). It is unclear whether it displays nucleotidyltransferase activity in vivo (PubMed:27271801). Binds single-stranded RNA (ssRNA) (PubMed:27271801).

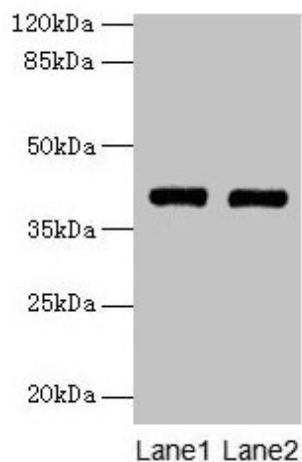


[View online »](#)

Product images:



Immunohistochemistry of paraffin-embedded human skeletal muscle tissue using [TA388432] at dilution of 1:100



Western blot
All lanes: MAB21L1 antibody at 6 μ g/ml
Lane 1: A375 whole cell lysate
Lane 2: CEM whole cell lysate
Secondary
Goat polyclonal to rabbit IgG at 1/10000 dilution
Predicted band size: 41 kDa
Observed band size: 41 kDa