

## Product datasheet for **TA388431M**

### **COL10A1 Rabbit Polyclonal Antibody**

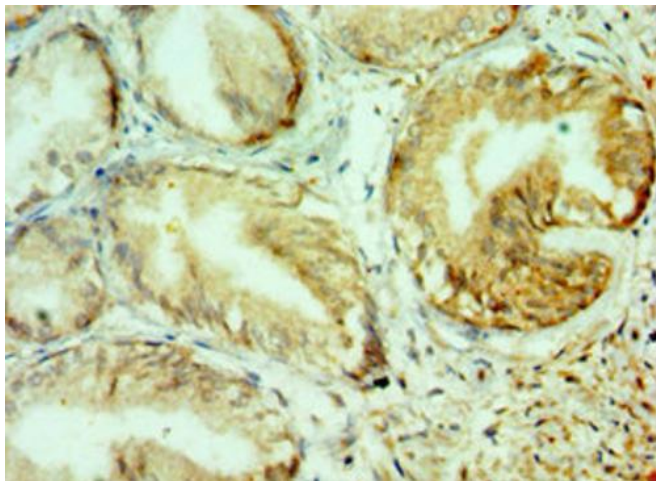
#### **Product data:**

Product Type:	Primary Antibodies
Applications:	IHC, WB
Recommended Dilution:	Recommended dilution: WB:1:500-1:2000, IHC:1:20-1:200
Reactivity:	Human
Host:	Rabbit
Isotype:	IgG
Clonality:	Polyclonal
Immunogen:	Recombinant Human Collagen alpha-1(X) chain protein (521-680AA)
Formulation:	PBS with 0.02% sodium azide, 50% glycerol, pH7.3.
Concentration:	lot specific
Purification:	Antigen Affinity Purified
Conjugation:	Unconjugated
Storage:	Upon receipt, store at -20°C or -80°C. Avoid repeated freeze.
Stability:	1 year from dispatch.
Database Link:	<a href="#">Q03692</a>
Background:	Type X collagen is a product of hypertrophic chondrocytes and has been localized to presumptive mineralization zones of hyaline cartilage.

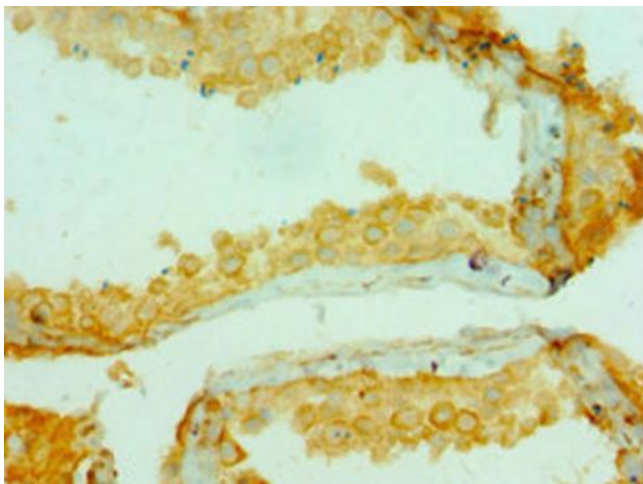


[View online »](#)

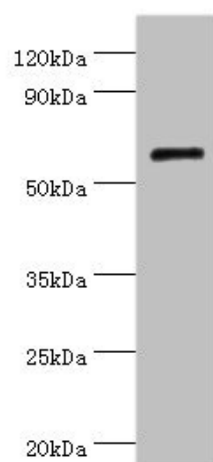
**Product images:**



Immunohistochemistry of paraffin-embedded human prostate tissue using [TA388431] at dilution of 1:100



Immunohistochemistry of paraffin-embedded human testis tissue using [TA388431] at dilution of 1:100



Western blot

All lanes: COL10A1 antibody at 4 $\mu$ g/ml + K562 whole cell lysate

Secondary

Goat polyclonal to rabbit IgG at 1/10000 dilution

Predicted band size: 66 kDa

Observed band size: 66 kDa