

Product datasheet for **TA388429**

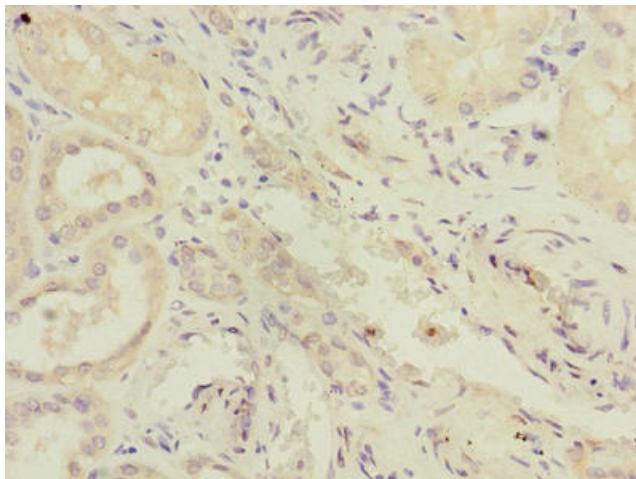
RAB4B Rabbit Polyclonal Antibody

Product data:

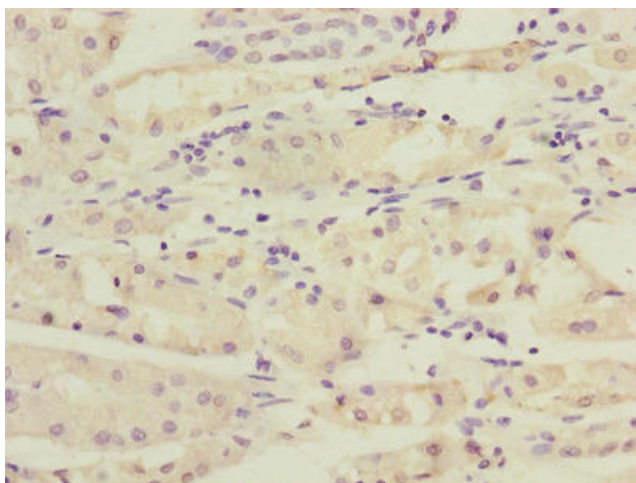
Product Type:	Primary Antibodies
Applications:	IHC, WB
Recommended Dilution:	Recommended dilution: WB:1:1000-1:5000, IHC:1:20-1:200
Reactivity:	Mouse, Human
Host:	Rabbit
Isotype:	IgG
Clonality:	Polyclonal
Immunogen:	Recombinant Human Ras-related protein Rab-4B protein (2-213AA)
Formulation:	Preservative: 0.03% Proclin 300 Constituents: 50% Glycerol, 0.01M PBS, PH 7.4
Concentration:	lot specific
Purification:	>95%, Protein G purified
Conjugation:	Unconjugated
Storage:	Upon receipt, store at -20°C or -80°C. Avoid repeated freeze.
Stability:	1 year from dispatch.
Database Link:	P61018
Background:	Protein transport. Probably involved in vesicular traffic.



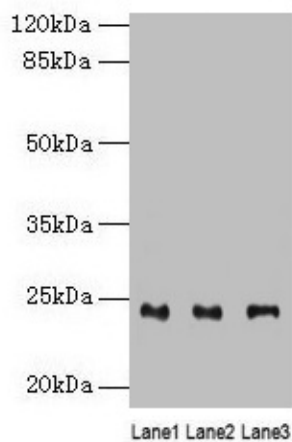
[View online »](#)

Product images:

Immunohistochemistry of paraffin-embedded human kidney tissue using TA388429 at dilution of 1:100



Immunohistochemistry of paraffin-embedded human gastric cancer using TA388429 at dilution of 1:100

**Western blot**

All lanes: RAB4B antibody at 4 μ g/ml

Lane 1: Mouse stomach tissue

Lane 2: Mouse kidney tissue

Lane 3: Mouse gonadal tissue

Secondary

Goat polyclonal to rabbit IgG at 1/10000 dilution

Predicted band size: 24, 28 kDa

Observed band size: 24 kDa