

Product datasheet for **TA388423M**

Avpr1a Rabbit Polyclonal Antibody

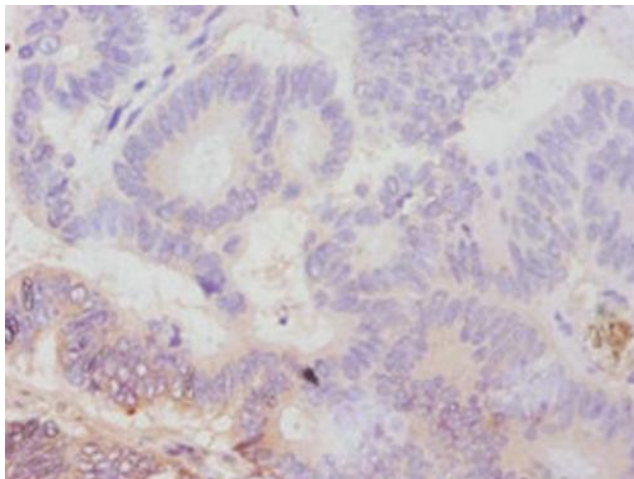
Product data:

Product Type:	Primary Antibodies
Applications:	IHC, WB
Recommended Dilution:	Recommended dilution: WB:1:1000-1:5000, IHC:1:20-1:200
Reactivity:	Rat, Mouse
Host:	Rabbit
Isotype:	IgG
Clonality:	Polyclonal
Immunogen:	Recombinant Rat Vasopressin V1a receptor protein (7-52AA)
Formulation:	PBS, Preservative: 0.1mol/L NaCl, 15mmol/L NaN ₃ , PH7.2
Concentration:	lot specific
Purification:	>95%, Protein G purified
Conjugation:	Unconjugated
Storage:	Upon receipt, store at -20°C or -80°C. Avoid repeated freeze.
Stability:	1 year from dispatch.
Database Link:	P30560
Background:	Receptor for arginine vasopressin. The activity of this receptor is mediated by G proteins which activate a phosphatidyl-inositol-calcium second messenger system. Involved in social memory formation.

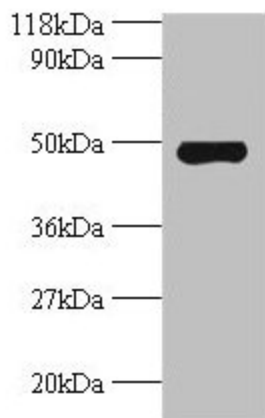


[View online »](#)

Product images:



Immunohistochemistry of paraffin-embedded human colon cancer using [TA388423] at dilution of 1:100



Western blot
All lanes: Avpr1a antibody at 2 μ g/ml + Mouse spleen tissue
Secondary
Goat polyclonal to rabbit IgG at 1/10000 dilution
Predicted band size: 48 kDa
Observed band size: 48 kDa