

## Product datasheet for **TA388421M**

### **CALML3 Rabbit Polyclonal Antibody**

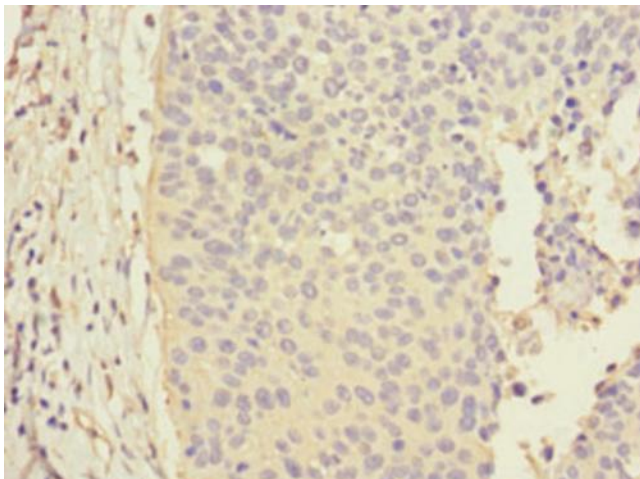
#### **Product data:**

Product Type:	Primary Antibodies
Applications:	IHC, WB
Recommended Dilution:	Recommended dilution: WB:1:1000-1:5000, IHC:1:20-1:200
Reactivity:	Human
Host:	Rabbit
Isotype:	IgG
Clonality:	Polyclonal
Immunogen:	Recombinant Human Calmodulin-like protein 3 protein (1-149AA)
Formulation:	PBS with 0.02% sodium azide, 50% glycerol, pH7.3.
Concentration:	lot specific
Purification:	Antigen Affinity Purified
Conjugation:	Unconjugated
Storage:	Upon receipt, store at -20°C or -80°C. Avoid repeated freeze.
Stability:	1 year from dispatch.
Database Link:	<a href="#">P27482</a>
Background:	May function as a specific light chain of unconventional myosin-10 (MYO10), also enhances MYO10 translation, possibly by acting as a chaperone for the emerging MYO10 heavy chain protein. May compete with calmodulin by binding, with different affinities, to cellular substrates.

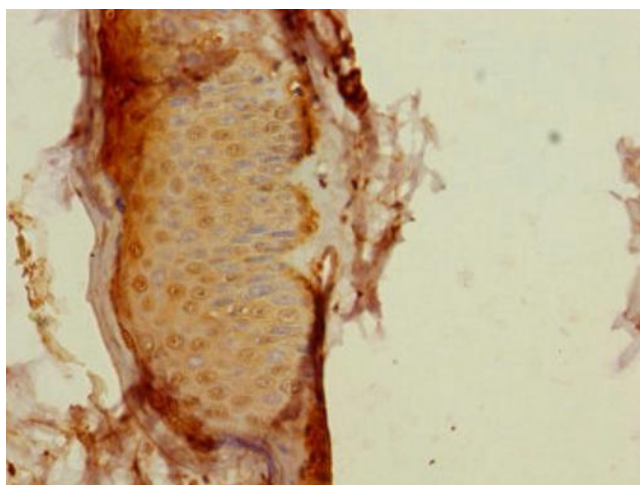


[View online »](#)

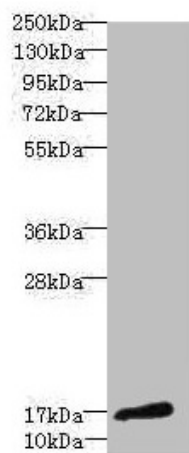
## Product images:



Immunohistochemistry of paraffin-embedded human cervical cancer using [TA388421] at dilution of 1:100



Immunohistochemistry of paraffin-embedded human skin tissue using [TA388421] at dilution of 1:100



Western blot

All lanes: CALML3 antibody at 1.44µg/ml + A431 whole cell lysate

Secondary

Goat polyclonal to rabbit IgG at 1/10000 dilution

Predicted band size: 17 kDa

Observed band size: 17 kDa