

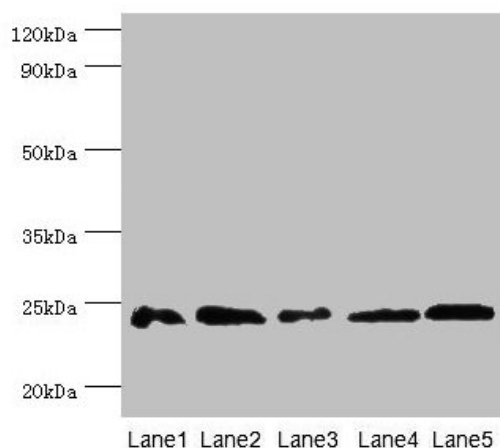
## Product datasheet for **TA388419M**

### Gstp1 Rabbit Polyclonal Antibody

#### Product data:

Product Type:	Primary Antibodies
Applications:	WB
Recommended Dilution:	Recommended dilution: WB:1:1000-1:5000
Reactivity:	Mouse, Human
Host:	Rabbit
Isotype:	IgG
Clonality:	Polyclonal
Immunogen:	Recombinant Mouse Glutathione S-transferase P 1 protein (2-210AA)
Formulation:	Preservative: 0.03% Proclin 300 Constituents: 50% Glycerol, 0.01M PBS, PH 7.4
Concentration:	lot specific
Purification:	>95%, Protein G purified
Conjugation:	Unconjugated
Storage:	Upon receipt, store at -20°C or -80°C. Avoid repeated freeze.
Stability:	1 year from dispatch.
Database Link:	<a href="#">P19157</a>
Background:	Conjugation of reduced glutathione to a wide number of exogenous and endogenous hydrophobic electrophiles. Can metabolize 1-chloro-2,4-dinitrobenzene. Regulates negatively CDK5 activity via p25/p35 translocation to prevent neurodegeneration .

[View online »](#)

**Product images:**

**Western blot**

All lanes: Gstp1 antibody at 2 $\mu$ g/ml

Lane 1: Mouse kidney tissue

Lane 2: Jurkat whole cell lysate

Lane 3: K562 whole cell lysate

Lane 4: 293T whole cell lysate

Lane 5: Hela whole cell lysate

Secondary

Goat polyclonal to rabbit IgG at 1/10000 dilution

Predicted band size: 24 kDa

Observed band size: 24 kDa