

Product datasheet for **TA388414M**

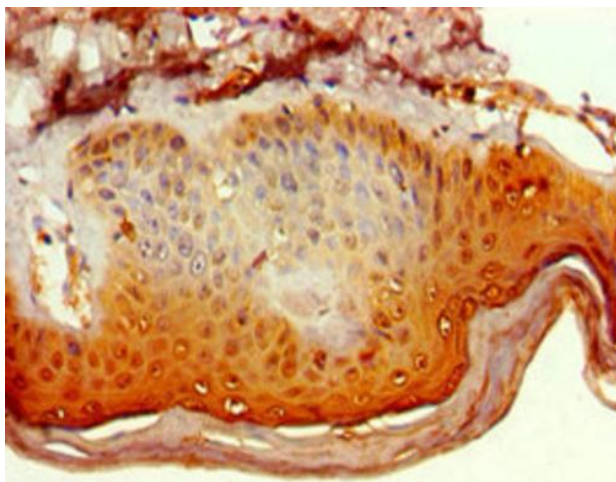
POLR1D Rabbit Polyclonal Antibody

Product data:

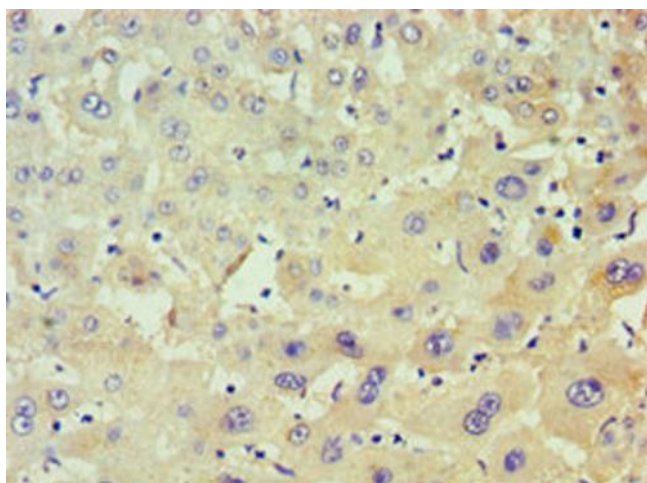
Product Type:	Primary Antibodies
Applications:	IHC, WB
Recommended Dilution:	Recommended dilution: WB:1:500-1:5000, IHC:1:20-1:200
Reactivity:	Human
Host:	Rabbit
Isotype:	IgG
Clonality:	Polyclonal
Immunogen:	Recombinant Human DNA-directed RNA polymerases I and III subunit RPAC2 protein (1-133AA)
Formulation:	PBS with 0.02% sodium azide, 50% glycerol, pH7.3.
Concentration:	lot specific
Purification:	Antigen Affinity Purified
Conjugation:	Unconjugated
Storage:	Upon receipt, store at -20°C or -80°C. Avoid repeated freeze.
Stability:	1 year from dispatch.
Database Link:	P0DPB6
Background:	DNA-dependent RNA polymerase catalyzes the transcription of DNA into RNA using the four ribonucleoside triphosphates as substrates. Common core component of RNA polymerases I and III which synthesize ribosomal RNA precursors and small RNAs, such as 5S rRNA and tRNAs, respectively.

[View online »](#)

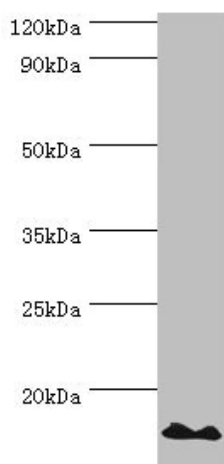
Product images:



Immunohistochemistry of paraffin-embedded human skin tissue using [TA388414] at dilution of 1:100



Immunohistochemistry of paraffin-embedded human liver tissue using [TA388414] at dilution of 1:100



Western blot

All lanes: DNA-directed RNA polymerases I and III subunit RPAC2 antibody at 10µg/ml + Jurkat whole cell lysate

Secondary

Goat polyclonal to rabbit IgG at 1/10000 dilution

Predicted band size: 16, 15 kDa

Observed band size: 16 kDa