

Product datasheet for **TA388413M**

PPIAL4G Rabbit Polyclonal Antibody

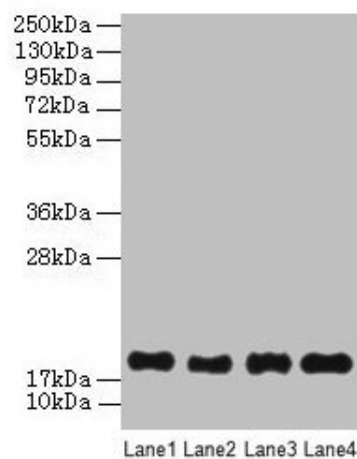
Product data:

Product Type:	Primary Antibodies
Applications:	IHC, WB
Recommended Dilution:	Recommended dilution: WB:1:500-1:5000, IHC:1:20-1:200
Reactivity:	Mouse, Human
Host:	Rabbit
Isotype:	IgG
Clonality:	Polyclonal
Immunogen:	Recombinant Human Peptidyl-prolyl cis-trans isomerase A-like 4G protein (1-164AA)
Formulation:	Preservative: 0.03% Proclin 300 Constituents: 50% Glycerol, 0.01M PBS, PH 7.4
Concentration:	lot specific
Purification:	>95%, Protein G purified
Conjugation:	Unconjugated
Storage:	Upon receipt, store at -20°C or -80°C. Avoid repeated freeze.
Stability:	1 year from dispatch.
Database Link:	P0DN37
Background:	PPIases accelerate the folding of proteins. It catalyzes the cis-trans isomerization of proline imidic peptide bonds in oligopeptides.



[View online »](#)

Product images:



Western Blot

All lanes: PPIAL4G antibody at 6µg/ml

Lane 1: Mouse liver tissue

Lane 2: Mouse spleen tissue

Lane 3: Mouse lung tissue

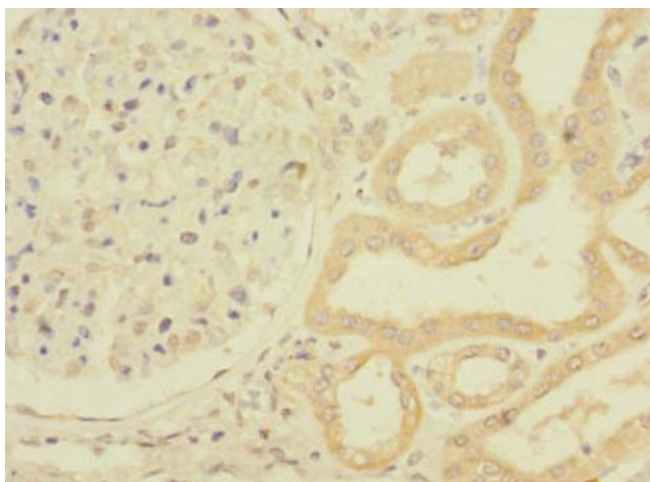
Lane 4: Mouse kidney tissue

Secondary

Goat polyclonal to rabbit IgG at 1/10000 dilution

Predicted band size: 19 kDa

Observed band size: 19 kDa



Immunohistochemistry of paraffin-embedded human kidney tissue using [TA388413] at dilution of 1:100