

Product datasheet for **TA388412M**

SLC10A3 Rabbit Polyclonal Antibody

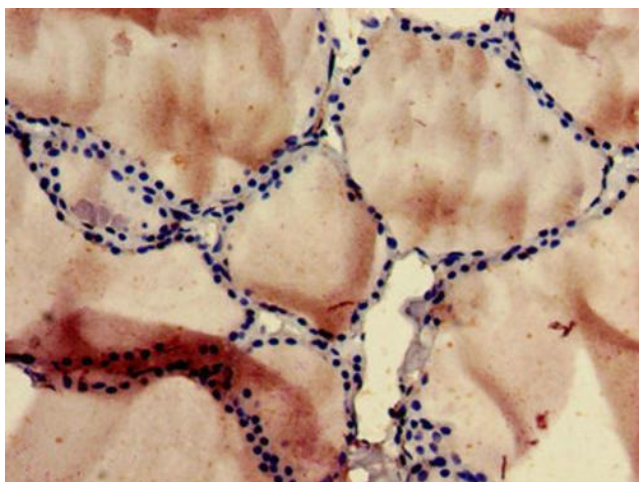
Product data:

Product Type:	Primary Antibodies
Applications:	IHC, WB
Recommended Dilution:	Recommended dilution: WB:1:500-1:5000, IHC:1:20-1:200
Reactivity:	Rat, Human
Host:	Rabbit
Isotype:	IgG
Clonality:	Polyclonal
Immunogen:	Recombinant Human P3 protein (7-151AA)
Formulation:	Preservative: 0.03% Proclin 300 Constituents: 50% Glycerol, 0.01M PBS, pH 7.4
Concentration:	lot specific
Purification:	>95%, Protein G purified
Conjugation:	Unconjugated
Storage:	Upon receipt, store at -20°C or -80°C. Avoid repeated freeze.
Stability:	1 year from dispatch.
Database Link:	P09131
Background:	The ubiquitous expression and the conservation of the sequence in distant animal species suggest that the gene codes for a protein with housekeeping functions.

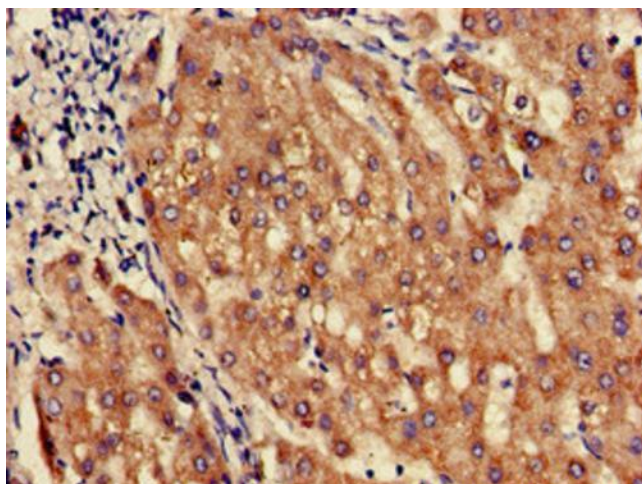


[View online »](#)

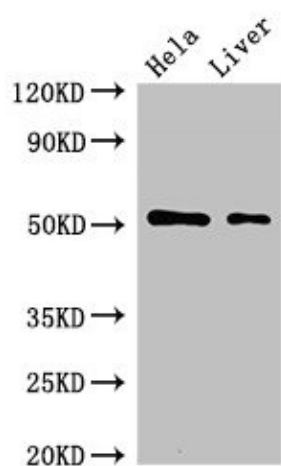
Product images:



Immunohistochemistry of paraffin-embedded human thyroid tissue using [TA388412] at dilution of 1:100



Immunohistochemistry of paraffin-embedded human liver tissue using [TA388412] at dilution of 1:100



Western Blot

Positive WB detected in: HeLa whole cell lysate,
Rat liver tissue

All lanes: SLC10A3 antibody at 2µg/ml

Secondary

Goat polyclonal to rabbit IgG at 1/50000 dilution

Predicted band size: 51, 48 kDa

Observed band size: 51 kDa