

## Product datasheet for **TA388406M**

### IFNA21 Rabbit Polyclonal Antibody

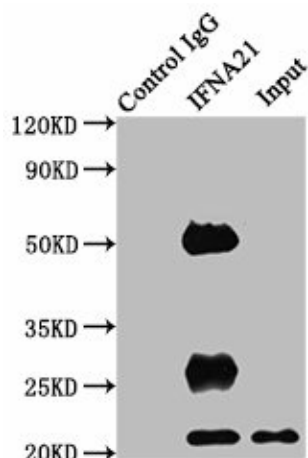
#### Product data:

Product Type:	Primary Antibodies
Applications:	IP, WB
Recommended Dilution:	Recommended dilution: WB:1:1000-1:5000, IP:1:200-1:2000
Reactivity:	Mouse, Human
Host:	Rabbit
Isotype:	IgG
Clonality:	Polyclonal
Immunogen:	Recombinant Human Interferon alpha-21 protein (24-189AA)
Formulation:	Preservative: 0.03% Proclin 300 Constituents: 50% Glycerol, 0.01M PBS, PH 7.4
Concentration:	lot specific
Purification:	>95%, Protein G purified
Conjugation:	Unconjugated
Storage:	Upon receipt, store at -20°C or -80°C. Avoid repeated freeze.
Stability:	1 year from dispatch.
Database Link:	<a href="#">P01568</a>

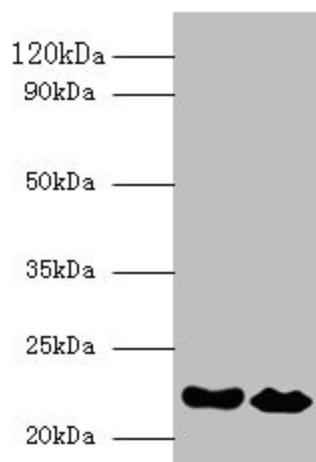


[View online »](#)

## Product images:



Immunoprecipitating IFNA21 in HEK293 whole cell lysate  
 Lane 1: Rabbit control IgG instead of [TA388406] in HEK293 whole cell lysate. For western blotting, a HRP-conjugated Protein G antibody was used as the secondary antibody (1/2000)  
 Lane 2: [TA388406] (8 $\mu$ g) + HEK293 whole cell lysate (500 $\mu$ g)  
 Lane 3: HEK293 whole cell lysate (10 $\mu$ g)



Western blot  
 All lanes: IFNA21 antibody at 2 $\mu$ g/ml  
 Lane 1: NIH/3T3 whole cell lysate  
 Lane 2: HepG2 whole cell lysate  
 Secondary  
 Goat polyclonal to rabbit IgG at 1/10000 dilution  
 Predicted band size: 22 kDa  
 Observed band size: 22 kDa