

Product datasheet for **TA388404M**

DNAL4 Rabbit Polyclonal Antibody

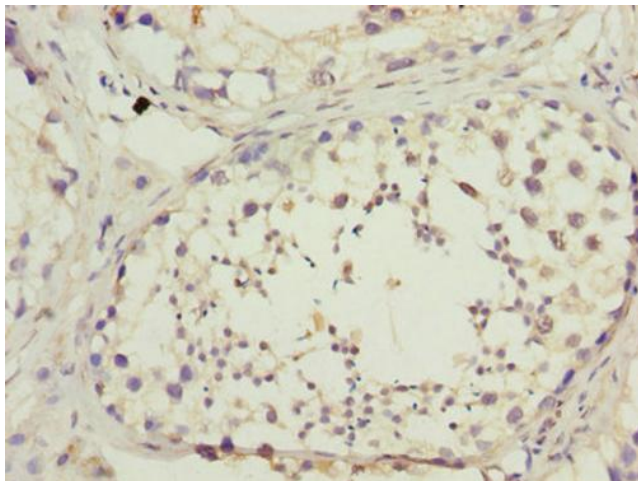
Product data:

Product Type:	Primary Antibodies
Applications:	IF, IHC, WB
Recommended Dilution:	Recommended dilution: WB:1:500-1:2000, IHC:1:20-1:200, IF:1:50-1:200
Reactivity:	Mouse, Human
Host:	Rabbit
Isotype:	IgG
Clonality:	Polyclonal
Immunogen:	Recombinant Human Dynein light chain 4, axonemal protein (1-105AA)
Formulation:	Preservative: 0.03% Proclin 300 Constituents: 50% Glycerol, 0.01M PBS, PH 7.4
Concentration:	lot specific
Purification:	Antigen Affinity Purified
Conjugation:	Unconjugated
Storage:	Upon receipt, store at -20°C or -80°C. Avoid repeated freeze.
Stability:	1 year from dispatch.
Database Link:	Q96015
Background:	Force generating protein of respiratory cilia. Produces force towards the minus ends of microtubules. Dynein has ATPase activity.

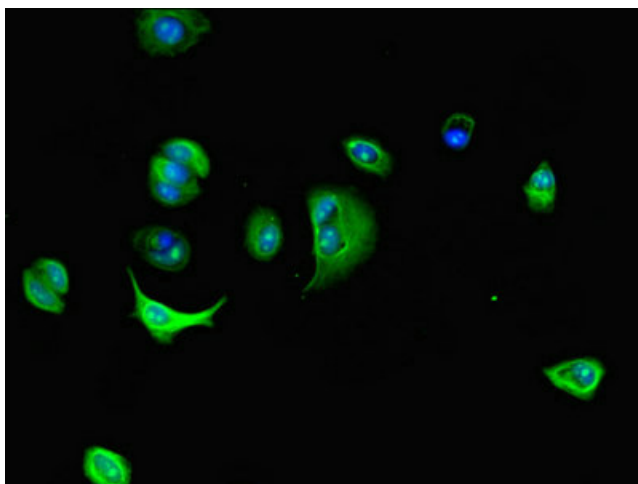


[View online »](#)

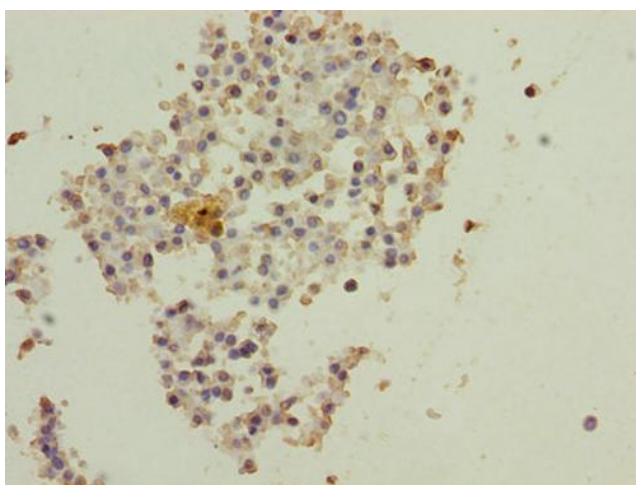
Product images:



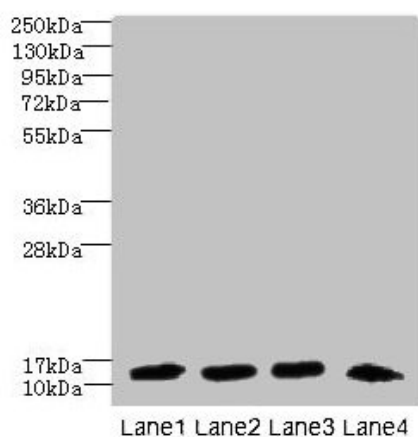
Immunohistochemistry of paraffin-embedded human testis tissue using [TA388404] at dilution of 1:100



Immunofluorescent analysis of MCF-7 cells using [TA388404] at dilution of 1:100 and Alexa Fluor 488-conjugated AffiniPure Goat Anti-Rabbit IgG(H+L)



Immunohistochemistry of paraffin-embedded human breast cancer using [TA388404] at dilution of 1:100



Western blot

All lanes: DNAL4 antibody at 1.5µg/ml

Lane 1: Mouse gonadal tissue

Lane 2: HL60 whole cell lysate

Lane 3: NIH/3T3 whole cell lysate

Lane 4: Mouse brain tissue

Secondary

Goat polyclonal to rabbit IgG at 1/10000 dilution

Predicted band size: 13 kDa

Observed band size: 13 kDa