

Product datasheet for **TA388404**

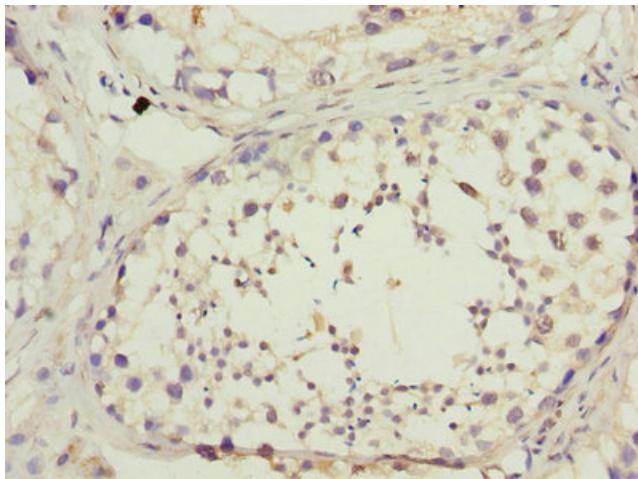
DNAL4 Rabbit Polyclonal Antibody

Product data:

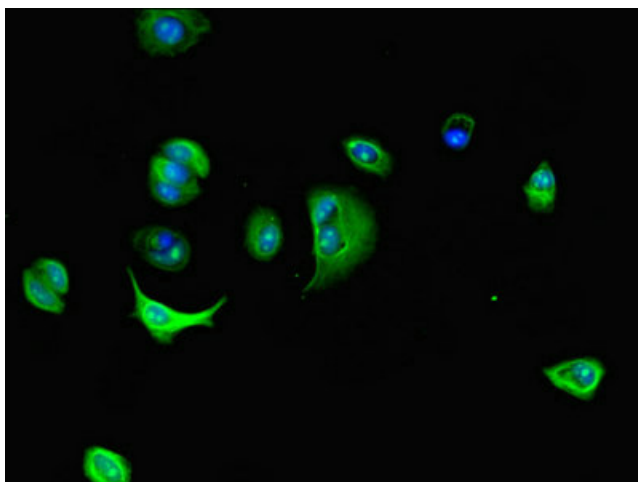
Product Type:	Primary Antibodies
Applications:	IF, IHC, WB
Recommended Dilution:	Recommended dilution: WB:1:500-1:2000, IHC:1:20-1:200, IF:1:50-1:200
Reactivity:	Mouse, Human
Host:	Rabbit
Isotype:	IgG
Clonality:	Polyclonal
Immunogen:	Recombinant Human Dynein light chain 4, axonemal protein (1-105AA)
Formulation:	Preservative: 0.03% Proclin 300 Constituents: 50% Glycerol, 0.01M PBS, PH 7.4
Concentration:	lot specific
Purification:	Antigen Affinity Purified
Conjugation:	Unconjugated
Storage:	Upon receipt, store at -20°C or -80°C. Avoid repeated freeze.
Stability:	1 year from dispatch.
Database Link:	O96015
Background:	Force generating protein of respiratory cilia. Produces force towards the minus ends of microtubules. Dynein has ATPase activity.



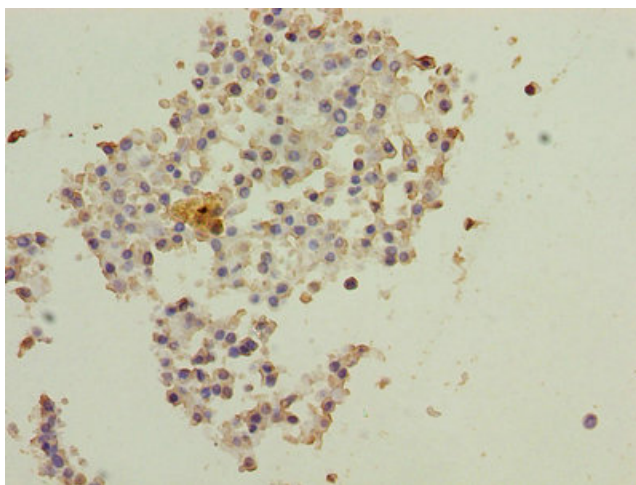
[View online »](#)

Product images:

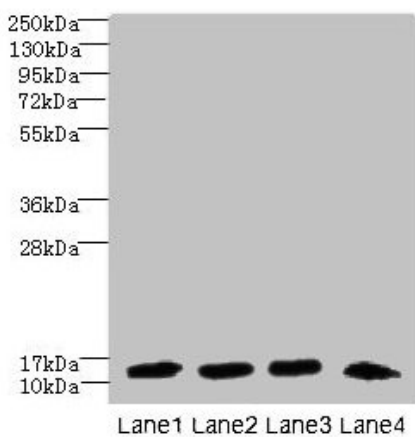
Immunohistochemistry of paraffin-embedded human testis tissue using TA388404 at dilution of 1:100



Immunofluorescent analysis of MCF-7 cells using TA388404 at dilution of 1:100 and Alexa Fluor 488-conjugated AffiniPure Goat Anti-Rabbit IgG(H+L)



Immunohistochemistry of paraffin-embedded human breast cancer using TA388404 at dilution of 1:100



Western blot
 All lanes: DNAL4 antibody at 1.5µg/ml
 Lane 1: Mouse gonadal tissue
 Lane 2: HL60 whole cell lysate
 Lane 3: NIH/3T3 whole cell lysate
 Lane 4: Mouse brain tissue
 Secondary
 Goat polyclonal to rabbit IgG at 1/10000 dilution
 Predicted band size: 13 kDa
 Observed band size: 13 kDa