

Product datasheet for **TA388403**

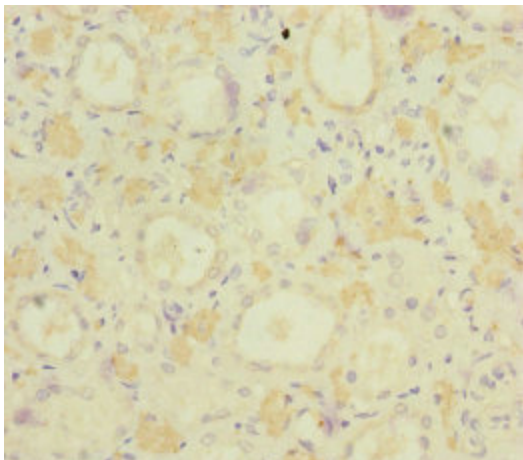
MOCS2 Rabbit Polyclonal Antibody

Product data:

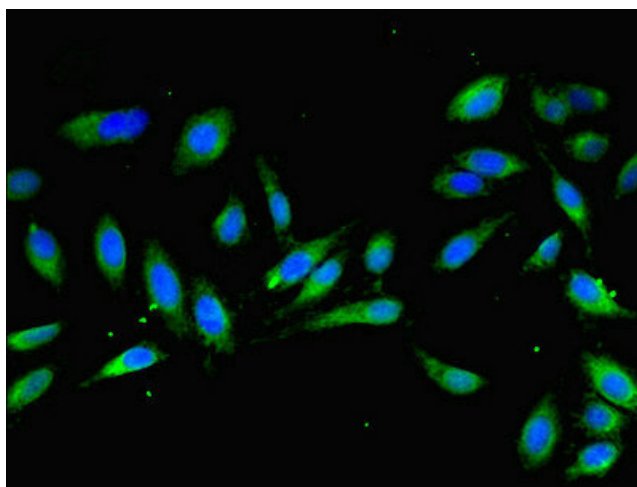
Product Type:	Primary Antibodies
Applications:	IF, IHC, IP, WB
Recommended Dilution:	Recommended dilution: WB:1:1000-1:5000, IHC:1:20-1:200, IP:1:200-1:2000, IF:1:50-1:200
Reactivity:	Human
Host:	Rabbit
Isotype:	IgG
Clonality:	Polyclonal
Immunogen:	Recombinant Human Molybdopterin synthase catalytic subunit protein (1-188AA)
Formulation:	PBS with 0.02% sodium azide, 50% glycerol, pH7.3.
Concentration:	lot specific
Purification:	Antigen Affinity Purified
Conjugation:	Unconjugated
Storage:	Upon receipt, store at -20°C or -80°C. Avoid repeated freeze.
Stability:	1 year from dispatch.
Database Link:	O96007
Background:	Acts as a sulfur carrier required for molybdopterin biosynthesis. Component of the molybdopterin synthase complex that catalyzes the conversion of precursor Z into molybdopterin by mediating the incorporation of 2 sulfur atoms into precursor Z to generate a dithiolene group. In the complex, serves as sulfur donor by being thiocarboxylated (-COSH) at its C-terminus by MOCS3. After interaction with MOCS2B, the sulfur is then transferred to precursor Z to form molybdopterin.



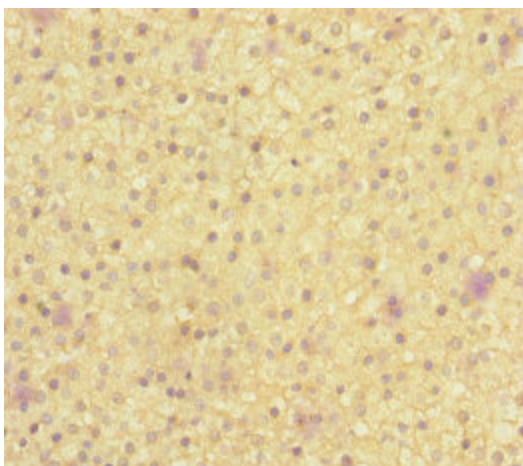
[View online »](#)

Product images:

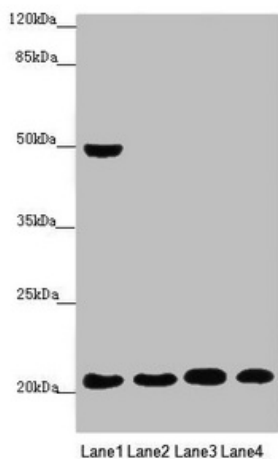
Immunohistochemistry of paraffin-embedded human kidney tissue using TA388403 at dilution of 1:100



Immunofluorescent analysis of HeLa cells using TA388403 at dilution of 1:100 and Alexa Fluor 488-conjugated AffiniPure Goat Anti-Rabbit IgG(H+L)



Immunohistochemistry of paraffin-embedded human adrenal gland tissue using TA388403 at dilution of 1:100



Western blot

All lanes: MOCS2 antibody at 0.47 $\mu\text{g/ml}$

Lane 1: A549 whole cell lysate

Lane 2: HepG2 whole cell lysate

Lane 3: Jurkat whole cell lysate

Lane 4: Hela whole cell lysate

Secondary

Goat polyclonal to rabbit IgG at 1/10000 dilution

Predicted band size: 21 kDa

Observed band size: 21, 49 kDa