

Product datasheet for **TA388402M**

MOCS2 Rabbit Polyclonal Antibody

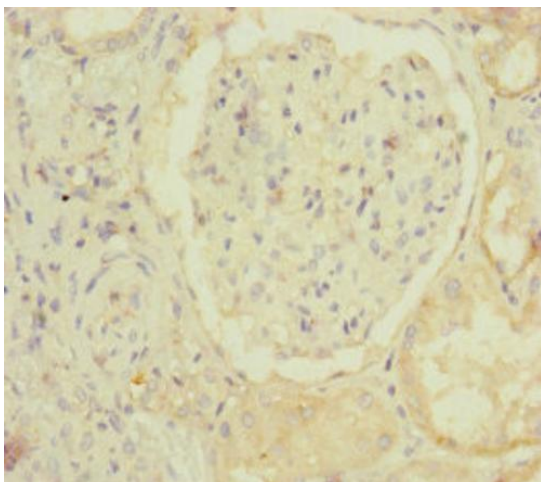
Product data:

| | |
|-----------------------|--|
| Product Type: | Primary Antibodies |
| Applications: | IF, IHC, IP, WB |
| Recommended Dilution: | Recommended dilution: WB:1:1000-1:5000, IHC:1:20-1:200, IP:1:200-1:2000, IF:1:50-1:200 |
| Reactivity: | Human |
| Host: | Rabbit |
| Isotype: | IgG |
| Clonality: | Polyclonal |
| Immunogen: | Recombinant Human Molybdopterin synthase catalytic subunit protein (1-188AA) |
| Formulation: | PBS with 0.02% sodium azide, 50% glycerol, pH7.3. |
| Concentration: | lot specific |
| Purification: | Antigen Affinity Purified |
| Conjugation: | Unconjugated |
| Storage: | Upon receipt, store at -20°C or -80°C. Avoid repeated freeze. |
| Stability: | 1 year from dispatch. |
| Database Link: | O96007 |
| Background: | Acts as a sulfur carrier required for molybdopterin biosynthesis. Component of the molybdopterin synthase complex that catalyzes the conversion of precursor Z into molybdopterin by mediating the incorporation of 2 sulfur atoms into precursor Z to generate a dithiolene group. In the complex, serves as sulfur donor by being thiocarboxylated (-COSH) at its C-terminus by MOCS3. After interaction with MOCS2B, the sulfur is then transferred to precursor Z to form molybdopterin. |

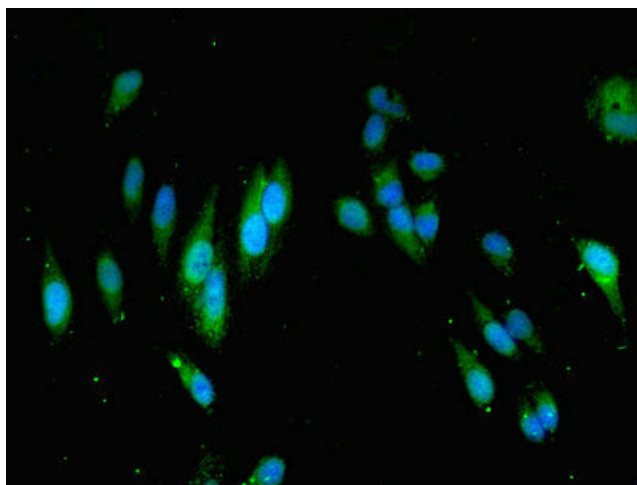


[View online »](#)

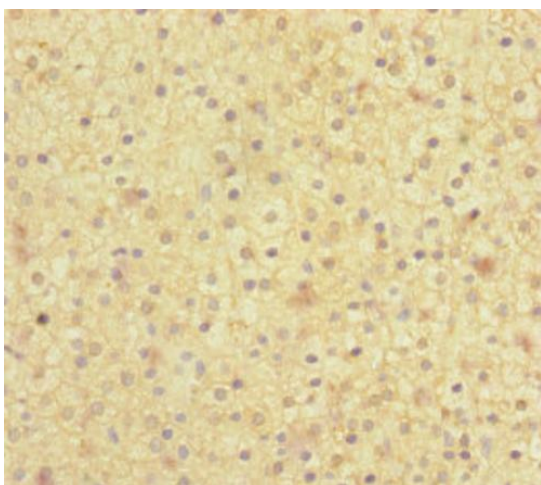
Product images:



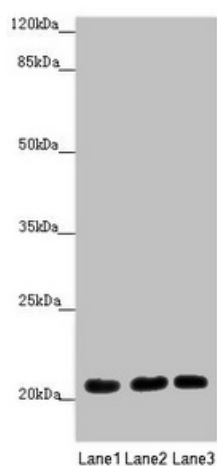
Immunohistochemistry of paraffin-embedded human kidney tissue using [TA388402] at dilution of 1:100



Immunofluorescent analysis of HeLa cells using [TA388402] at dilution of 1:100 and Alexa Fluor 488-conjugated AffiniPure Goat Anti-Rabbit IgG(H+L)



Immunohistochemistry of paraffin-embedded human adrenal gland tissue using [TA388402] at dilution of 1:100



Western blot
 All lanes: MOC52 antibody at 1.68 µg/ml
 Lane 1: A549 whole cell lysate
 Lane 2: HepG2 whole cell lysate
 Lane 3: Jurkat whole cell lysate
 Secondary
 Goat polyclonal to rabbit IgG at 1/10000 dilution
 Predicted band size: 21 kDa
 Observed band size: 21 kDa