

## Product datasheet for **TA388398**

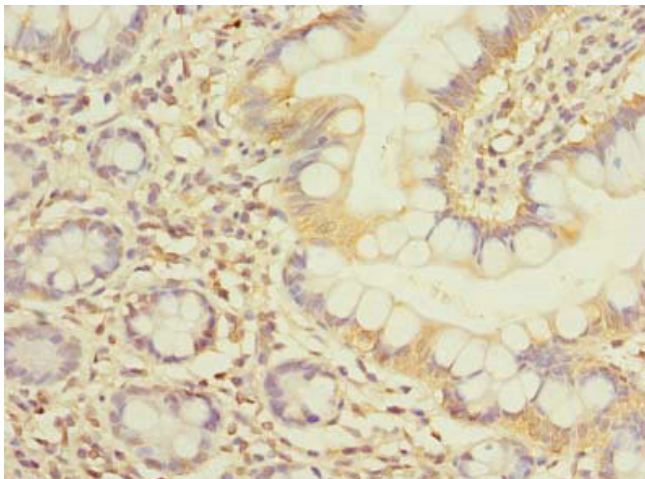
### FCHSD2 Rabbit Polyclonal Antibody

#### Product data:

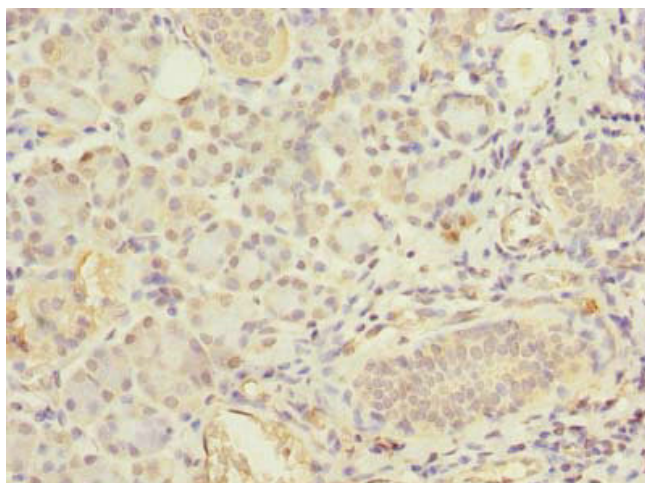
Product Type:	Primary Antibodies
Applications:	IHC, WB
Recommended Dilution:	Recommended dilution: WB:1:500-1:2000, IHC:1:20-1:200
Reactivity:	Human
Host:	Rabbit
Isotype:	IgG
Clonality:	Polyclonal
Immunogen:	Recombinant Human F-BAR and double SH3 domains protein 2 protein (1-290AA)
Formulation:	Preservative: 0.03% Proclin 300 Constituents: 50% Glycerol, 0.01M PBS, PH 7.4
Concentration:	lot specific
Purification:	>95%, Protein G purified
Conjugation:	Unconjugated
Storage:	Upon receipt, store at -20°C or -80°C. Avoid repeated freeze.
Stability:	1 year from dispatch.
Database Link:	<a href="#">O94868</a>



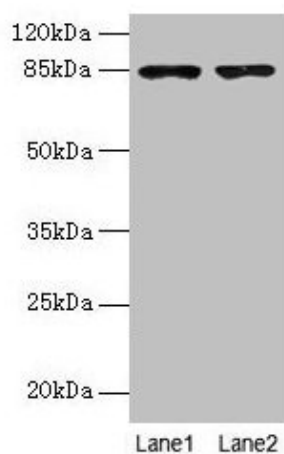
[View online »](#)

**Product images:**

Immunohistochemistry of paraffin-embedded human small intestine tissue using TA388398 at dilution of 1:100



Immunohistochemistry of paraffin-embedded human pancreatic tissue using TA388398 at dilution of 1:100



## Western blot

All lanes: FCHSD2 antibody at 12 $\mu$ g/ml

Lane 1: U251 whole cell lysate

Lane 2: A549 whole cell lysate

Secondary

Goat polyclonal to rabbit IgG at 1/10000 dilution

Predicted band size: 85, 78, 59 kDa

Observed band size: 85 kDa