

## Product datasheet for **TA388394M**

### ATP6V1G1 Rabbit Polyclonal Antibody

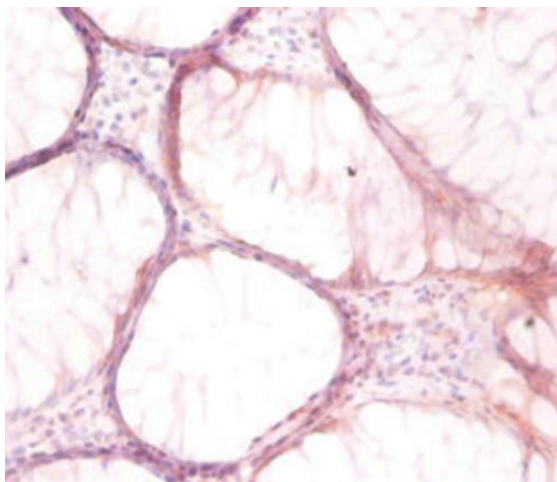
#### Product data:

Product Type:	Primary Antibodies
Applications:	IF, IHC, WB
Recommended Dilution:	Recommended dilution: WB:1:1000-1:5000, IHC:1:20-1:200, IF:1:50-1:200
Reactivity:	Human
Host:	Rabbit
Isotype:	IgG
Clonality:	Polyclonal
Immunogen:	Recombinant Human V-type proton ATPase subunit G 1 protein (2-118AA)
Formulation:	Preservative: 0.03% Proclin 300 Constituents: 50% Glycerol, 0.01M PBS, PH 7.4
Concentration:	lot specific
Purification:	>95%, Protein G purified
Conjugation:	Unconjugated
Storage:	Upon receipt, store at -20°C or -80°C. Avoid repeated freeze.
Stability:	1 year from dispatch.
Database Link:	<a href="#">Q75348</a>
Background:	This protein is a component of vacuolar ATPase (V-ATPase), a multisubunit enzyme that mediates acidification of eukaryotic intracellular organelles. V-ATPase dependent organelle acidification is necessary for such intracellular processes as protein sorting, zymogen activation, receptor-mediated endocytosis, and synaptic vesicle proton gradient generation.

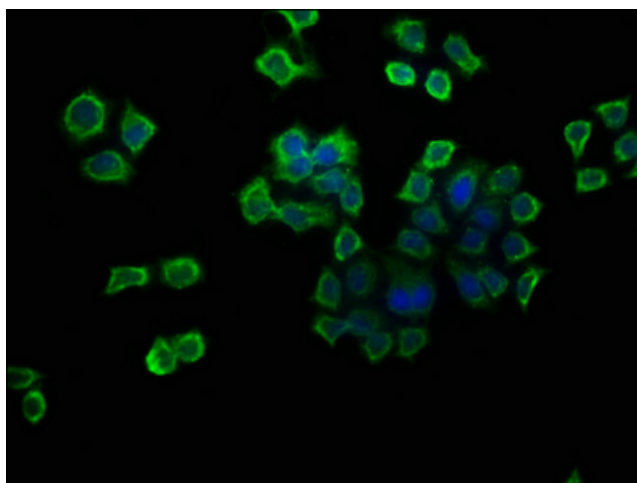


[View online »](#)

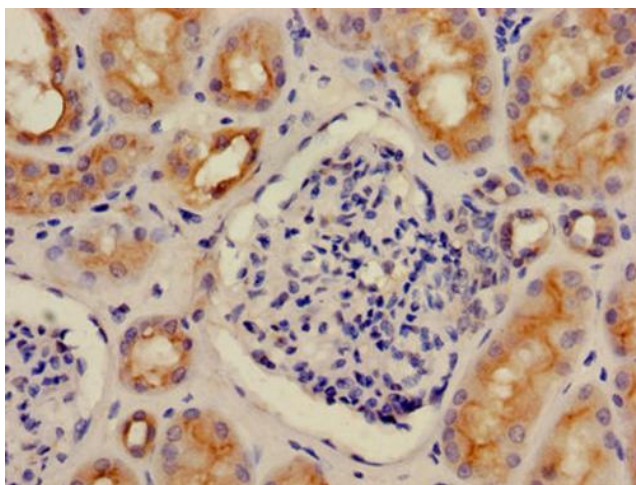
## Product images:



Immunohistochemistry of paraffin-embedded human colon cancer using [TA388394] at dilution of 1:50



Immunofluorescence staining of PC-3 cells with [TA388394] at 1:133, counter-stained with DAPI. The cells were fixed in 4% formaldehyde, permeabilized using 0.2% Triton X-100 and blocked in 10% normal Goat Serum. The cells were then incubated with the antibody overnight at 4°C. The secondary antibody was Alexa Fluor 488-conjugated AffiniPure Goat Anti-Rabbit IgG(H+L).



Immunohistochemistry of paraffin-embedded human kidney tissue using [TA388394] at dilution of 1:100



Western blot  
All lanes: V-type proton ATPase subunit G 1 antibody at 2 $\mu$ g/ml + 293T whole cell lysate  
Secondary  
Goat polyclonal to rabbit IgG at 1/15000 dilution  
Predicted band size: 13 kDa  
Observed band size: 13 kDa