

Product datasheet for **TA388389**

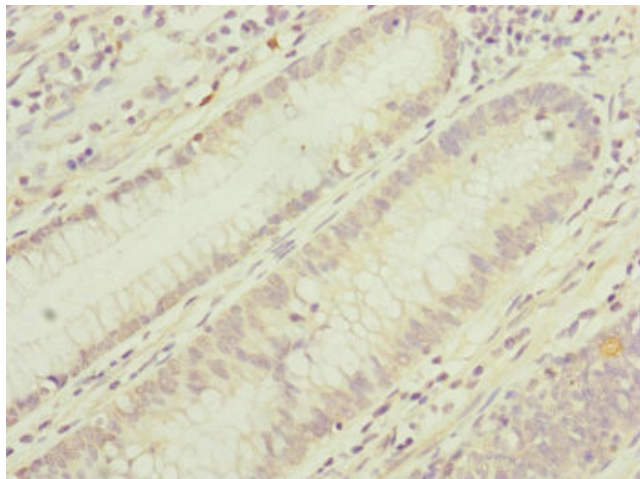
TIMM17B Rabbit Polyclonal Antibody

Product data:

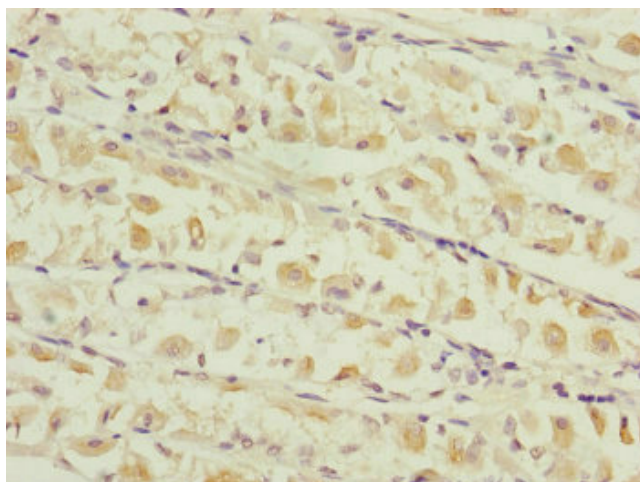
Product Type:	Primary Antibodies
Applications:	IHC, WB
Recommended Dilution:	Recommended dilution: WB:1:1000-1:5000, IHC:1:20-1:200
Reactivity:	Human
Host:	Rabbit
Isotype:	IgG
Clonality:	Polyclonal
Immunogen:	Recombinant Human Mitochondrial import inner membrane translocase subunit Tim17-B protein (1-172AA)
Formulation:	PBS with 0.02% sodium azide, 50% glycerol, pH7.3.
Concentration:	lot specific
Purification:	Antigen Affinity Purified
Conjugation:	Unconjugated
Storage:	Upon receipt, store at -20°C or -80°C. Avoid repeated freeze.
Stability:	1 year from dispatch.
Database Link:	O60830
Background:	Essential component of the TIM23 complex, a complex that mediates the translocation of transit peptide-containing proteins across the mitochondrial inner membrane.



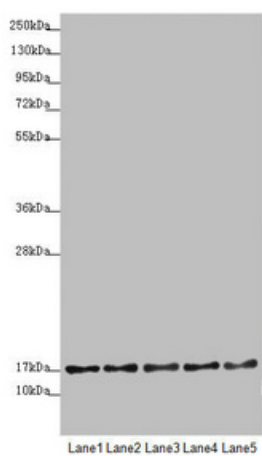
[View online »](#)

Product images:

Immunohistochemistry of paraffin-embedded human colon cancer using TA388389 at dilution of 1:100



Immunohistochemistry of paraffin-embedded human gastric cancer using TA388389 at dilution of 1:100



Western blot

All lanes: TIMM17B antibody at 1.75 $\mu\text{g}/\text{ml}$

Lane 1: U251 whole cell lysate

Lane 2: Jurkat whole cell lysate

Lane 3: HepG2 whole cell lysate

Lane 4: HL60 whole cell lysate

Lane 5: A431 whole cell lysate

Secondary

Goat polyclonal to rabbit IgG at 1/10000 dilution

Predicted band size: 19, 24 kDa

Observed band size: 19 kDa