

## Product datasheet for **TA388388**

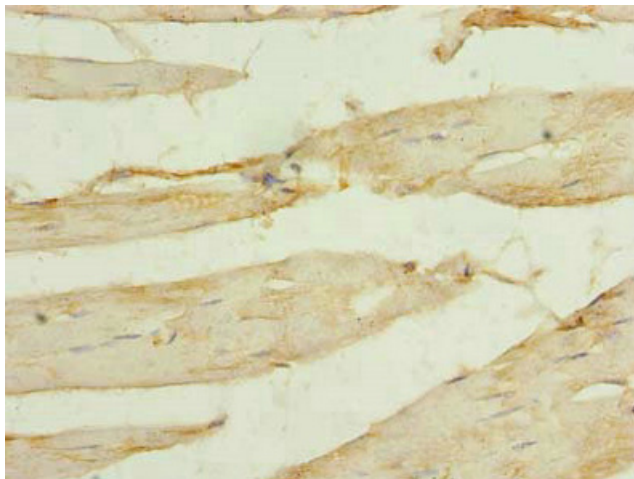
### SORBS3 Rabbit Polyclonal Antibody

#### Product data:

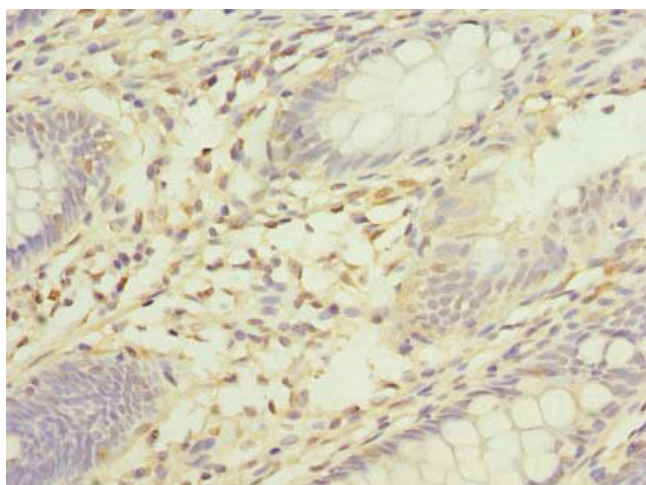
Product Type:	Primary Antibodies
Applications:	IHC, WB
Recommended Dilution:	Recommended dilution: WB:1:500-1:2000, IHC:1:20-1:200
Reactivity:	Human
Host:	Rabbit
Isotype:	IgG
Clonality:	Polyclonal
Immunogen:	Recombinant Human Vinexin protein (1-329AA)
Formulation:	Preservative: 0.03% Proclin 300 Constituents: 50% Glycerol, 0.01M PBS, PH 7.4
Concentration:	lot specific
Purification:	>95%, Protein G purified
Conjugation:	Unconjugated
Storage:	Upon receipt, store at -20°C or -80°C. Avoid repeated freeze.
Stability:	1 year from dispatch.
Database Link:	<a href="#">O60504</a>
Background:	Vinexin alpha isoform promotes up-regulation of actin stress fiber formation. Vinexin beta isoform plays a role in cell spreading and enhances the activation of JNK/SAPK in response to EGF stimulation by using its third SH3 domain.



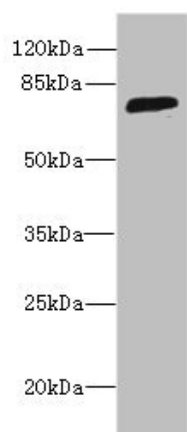
[View online »](#)

**Product images:**

Immunohistochemistry of paraffin-embedded human skeletal muscle tissue using TA388388 at dilution of 1:100



Immunohistochemistry of paraffin-embedded human colon cancer using TA388388 at dilution of 1:100



Western blot

All lanes: SORBS3 antibody at 8 $\mu$ g/ml + HepG2 whole cell lysate

Secondary

Goat polyclonal to rabbit IgG at 1/10000 dilution

Predicted band size: 76, 37 kDa

Observed band size: 76 kDa