

## Product datasheet for **TA388386**

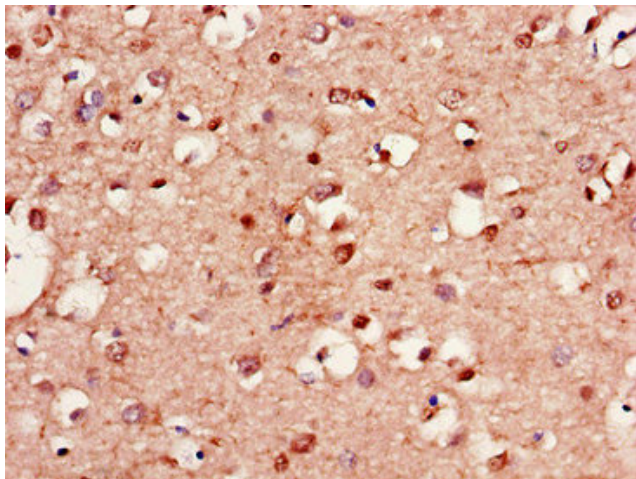
### LANCL1 Rabbit Polyclonal Antibody

#### Product data:

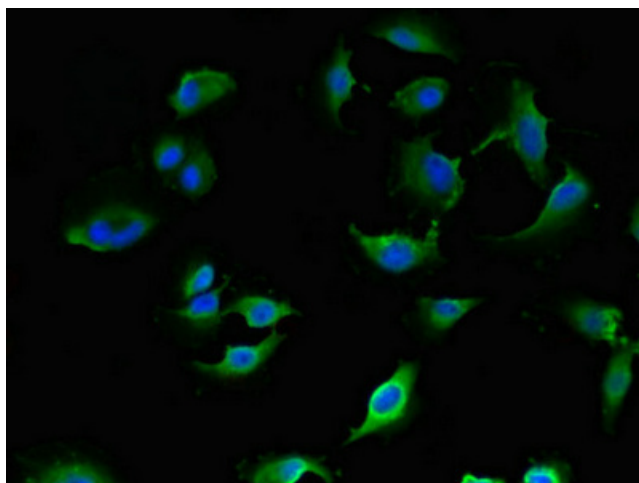
Product Type:	Primary Antibodies
Applications:	IF, IHC, WB
Recommended Dilution:	Recommended dilution: WB:1:500-1:5000, IHC:1:20-1:200, IF:1:50-1:200
Reactivity:	Mouse, Human
Host:	Rabbit
Isotype:	IgG
Clonality:	Polyclonal
Immunogen:	Recombinant Human LanC-like protein 1 protein (50-150AA)
Formulation:	Preservative: 0.03% Proclin 300 Constituents: 50% Glycerol, 0.01M PBS, PH 7.4
Concentration:	lot specific
Purification:	>95%, Protein G purified
Conjugation:	Unconjugated
Storage:	Upon receipt, store at -20°C or -80°C. Avoid repeated freeze.
Stability:	1 year from dispatch.
Database Link:	<a href="#">O43813</a>
Background:	May play a role in EPS8 signaling. Binds glutathione.



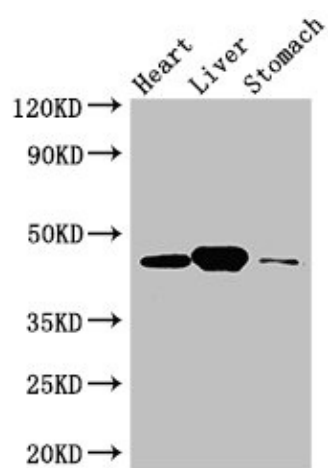
[View online »](#)

**Product images:**

Immunohistochemistry of paraffin-embedded human brain tissue using TA388386 at dilution of 1:100



Immunofluorescent analysis of U251 cells using TA388386 at dilution of 1:100 and Alexa Fluor 488-conjugated AffiniPure Goat Anti-Rabbit IgG(H+L)



Western Blot

Positive WB detected in: Mouse heart tissue,  
Mouse liver tissue, Mouse stomach tissue

All lanes: LANCL1 antibody at 3 $\mu$ g/ml

Secondary

Goat polyclonal to rabbit IgG at 1/50000 dilution

Predicted band size: 46 kDa

Observed band size: 46 kDa