

## Product datasheet for **TA388381**

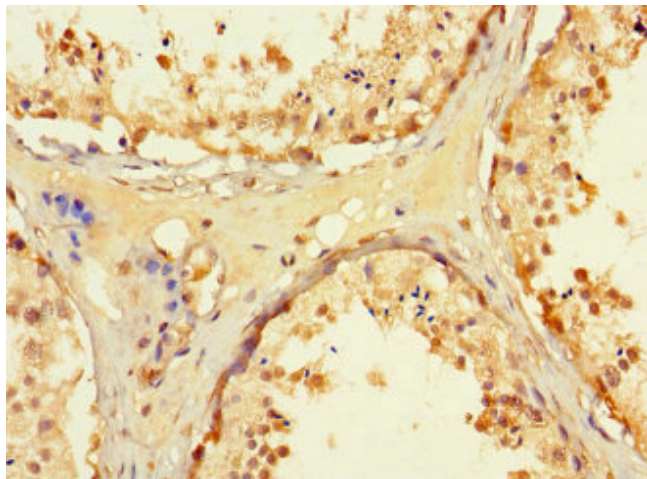
### GET1 Rabbit Polyclonal Antibody

#### Product data:

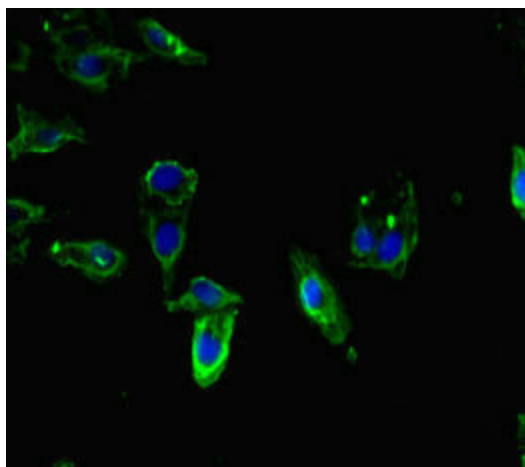
Product Type:	Primary Antibodies
Applications:	IF, IHC, WB
Recommended Dilution:	Recommended dilution: WB:1:2000-1:5000, IHC:1:20-1:200, IF:1:50-1:200
Reactivity:	Mouse, Human
Host:	Rabbit
Isotype:	IgG
Clonality:	Polyclonal
Immunogen:	Recombinant Human Tail-anchored protein insertion receptor WRB protein (38-99AA)
Formulation:	Preservative: 0.03% Proclin 300 Constituents: 50% Glycerol, 0.01M PBS, PH 7.4
Concentration:	lot specific
Purification:	>95%, Protein G purified
Conjugation:	Unconjugated
Storage:	Upon receipt, store at -20°C or -80°C. Avoid repeated freeze.
Stability:	1 year from dispatch.
Database Link:	<a href="#">O00258</a>
Background:	Receptor for ASNA1/TRC40-mediated insertion of tail-anchored (TA) proteins into the ER membrane.



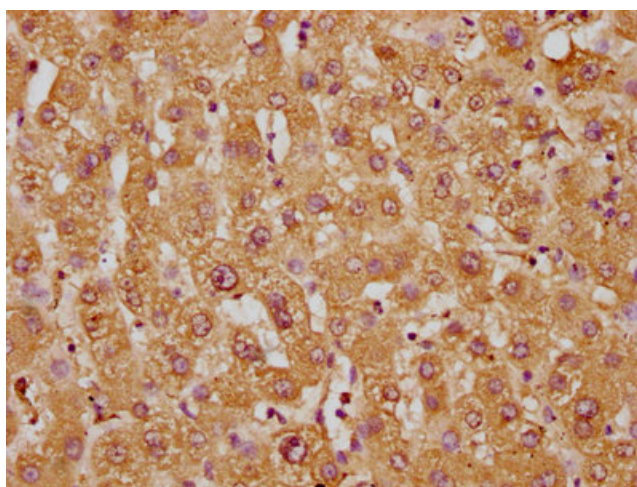
[View online »](#)

**Product images:**

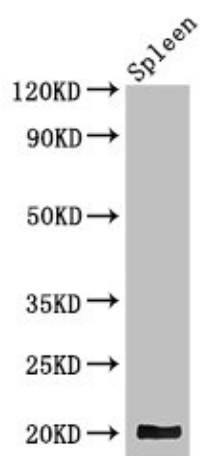
Immunohistochemistry of paraffin-embedded human testis tissue using TA388381 at dilution of 1:100



Immunofluorescent analysis of HeLa cells using TA388381 at dilution of 1:100 and Alexa Fluor 488-conjugated AffiniPure Goat Anti-Rabbit IgG(H+L)



Immunohistochemistry of paraffin-embedded human liver tissue using TA388381 at dilution of 1:100



Western Blot

Positive WB detected in: Mouse spleen tissue

All lanes: WRB antibody at 3.4ug/ml

Secondary

Goat polyclonal to rabbit IgG at 1/50000 dilution

Predicted band size: 20, 17 kDa

Observed band size: 20 kDa