

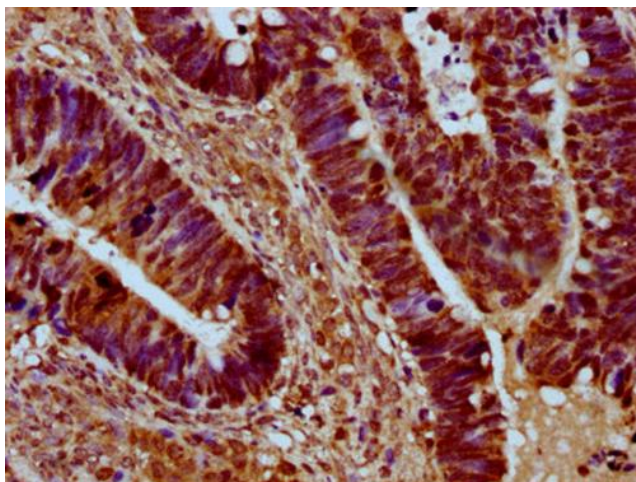
Product datasheet for **TA388379**

SRRM4 Rabbit Polyclonal Antibody

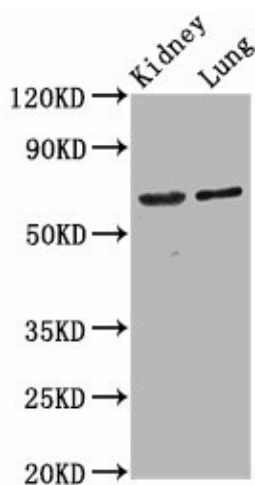
Product data:

Product Type:	Primary Antibodies
Applications:	IHC, WB
Recommended Dilution:	Recommended dilution: WB:1:500–1:5000, IHC:1:500–1:1000
Reactivity:	Mouse, Rat, Human
Host:	Rabbit
Isotype:	IgG
Clonality:	Polyclonal
Immunogen:	Recombinant Human Serine/arginine repetitive matrix protein 4 protein (400–479AA)
Formulation:	Preservative: 0.03% Proclin 300 Constituents: 50% Glycerol, 0.01M PBS, pH 7.4
Concentration:	lot specific
Purification:	>95%, Protein G purified
Conjugation:	Unconjugated
Storage:	Upon receipt, store at –20°C or –80°C. Avoid repeated freeze.
Stability:	1 year from dispatch.
Database Link:	A7MD48
Background:	Splicing factor specifically required for neural cell differentiation. Acts in conjunction with nPTB/PTBP2 by binding directly to its regulated target transcripts and promotes neural-specific exon inclusion in many genes that function in neural cell differentiation. Required to promote the inclusion of neural-specific exon 10 in nPTB/PTBP2, leading to increased expression of neural-specific nPTB/PTBP2. Also promotes the inclusion of exon 16 in DAAM1 in neuron extracts (By similarity).



Product images:

IHC image of TA388379 diluted at 1:500 and staining in paraffin-embedded human ovarian cancer performed on a Leica BondTM system. After dewaxing and hydration, antigen retrieval was mediated by high pressure in a citrate buffer (pH 6.0). Section was blocked with 10% normal goat serum 30min at RT. Then primary antibody (1% BSA) was incubated at 4°C overnight. The primary is detected by a biotinylated secondary antibody and visualized using an HRP conjugated SP system.

**Western Blot**

Positive WB detected in: Rat kidney tissue,
Mouse lung tissue

All lanes: SRRM4 antibody at 4.2µg/ml

Secondary

Goat polyclonal to rabbit IgG at 1/50000
dilution

Predicted band size: 69 kDa

Observed band size: 69 kDa