

## Product datasheet for **TA388378**

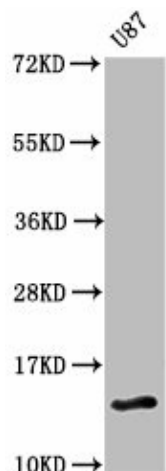
### RTL8C Rabbit Polyclonal Antibody

#### Product data:

Product Type:	Primary Antibodies
Applications:	IHC, WB
Recommended Dilution:	Recommended dilution: WB:1:500–1:5000, IHC:1:20–1:200
Reactivity:	Human
Host:	Rabbit
Isotype:	IgG
Clonality:	Polyclonal
Immunogen:	Recombinant Human Retrotransposon Gag-like protein 8B protein (1-113AA)
Formulation:	Preservative: 0.03% Proclin 300 Constituents: 50% Glycerol, 0.01M PBS, PH 7.4
Concentration:	lot specific
Purification:	>95%, Protein G purified
Conjugation:	Unconjugated
Storage:	Upon receipt, store at –20°C or –80°C. Avoid repeated freeze.
Stability:	1 year from dispatch.
Database Link:	<a href="#">A6ZK13</a>



**Product images:**



**Western Blot**

Positive WB detected in: U87 whole cell lysate

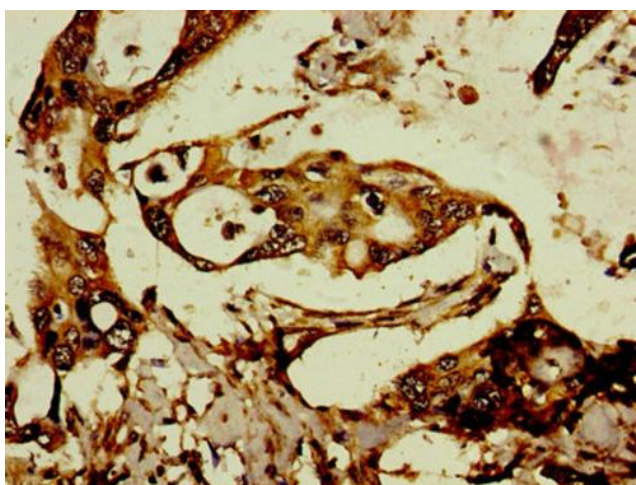
All lanes: RTL8C antibody at 3µg/ml

Secondary

Goat polyclonal to rabbit IgG at 1/50000 dilution

Predicted band size: 14 kDa

Observed band size: 14 kDa



**Immunohistochemistry of paraffin-**

embedded human pancreatic cancer using

TA388378 at dilution of 1:100