

Product datasheet for **TA388370**

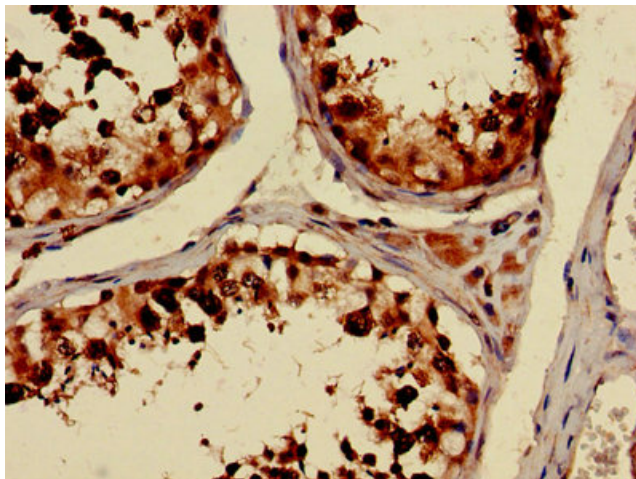
TUBA3C Rabbit Polyclonal Antibody

Product data:

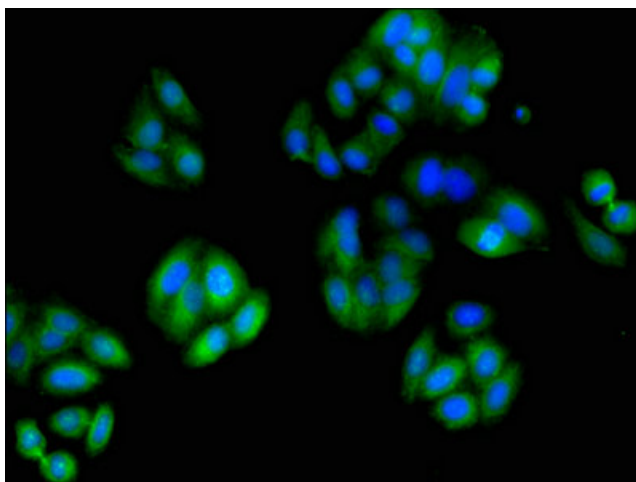
Product Type:	Primary Antibodies
Applications:	IF, IHC, WB
Recommended Dilution:	Recommended dilution: WB:1:1000-1:5000, IHC:1:20-1:200, IF:1:50-1:200
Reactivity:	Mouse, Human
Host:	Rabbit
Isotype:	IgG
Clonality:	Polyclonal
Immunogen:	Recombinant Human Tubulin alpha-3C/D chain protein (161-418AA)
Formulation:	Preservative: 0.03% Proclin 300 Constituents: 50% Glycerol, 0.01M PBS, PH 7.4
Concentration:	lot specific
Purification:	>95%, Protein G purified
Conjugation:	Unconjugated
Storage:	Upon receipt, store at -20°C or -80°C. Avoid repeated freeze.
Stability:	1 year from dispatch.
Database Link:	Q13748
Background:	Tubulin is the major constituent of microtubules. It binds two moles of GTP, one at an exchangeable site on the beta chain and one at a non-exchangeable site on the alpha chain.



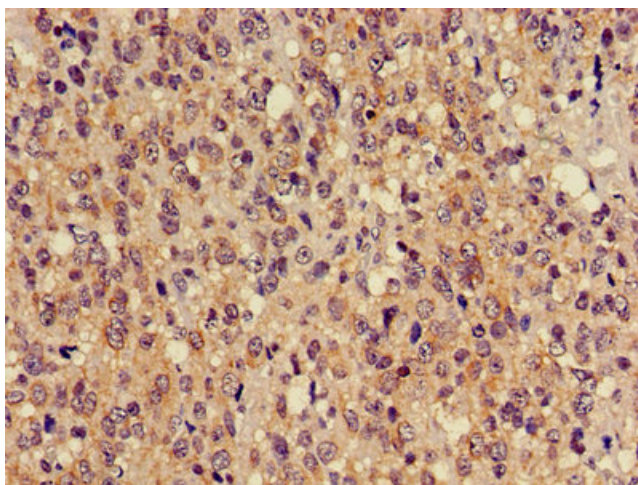
[View online »](#)

Product images:

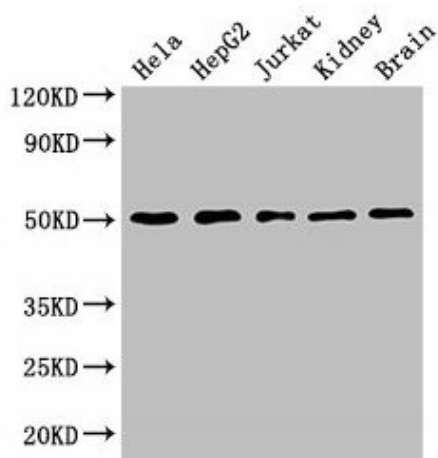
Immunohistochemistry of paraffin-embedded human testis tissue using TA388370 at dilution of 1:100



Immunofluorescent analysis of HepG2 cells using TA388370 at dilution of 1:100 and Alexa Fluor 488-conjugated AffiniPure Goat Anti-Rabbit IgG(H+L)



Immunohistochemistry of paraffin-embedded human glioma using TA388370 at dilution of 1:100



Western Blot

Positive WB detected in: HeLa whole cell lysate, HepG2 whole cell lysate, Jurkat whole cell lysate, Mouse kidney tissue, Mouse brain tissue
 All lanes: TUBA3C antibody at 3µg/ml
 Secondary
 Goat polyclonal to rabbit IgG at 1/50000 dilution
 Predicted band size: 50, 47 kDa
 Observed band size: 50 kDa