

## Product datasheet for **TA388365M**

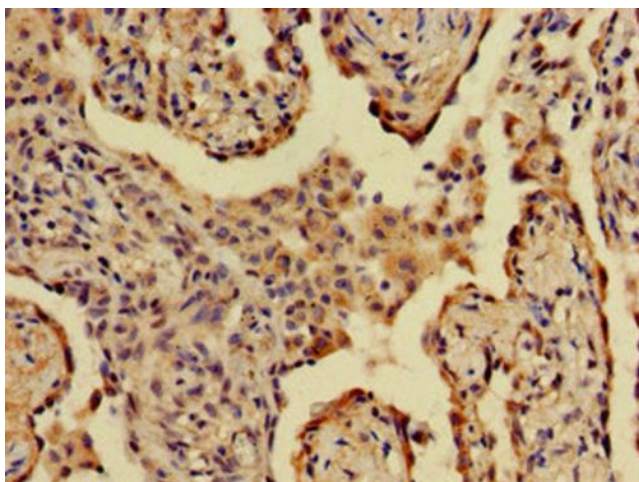
### A2ML1 Rabbit Polyclonal Antibody

#### Product data:

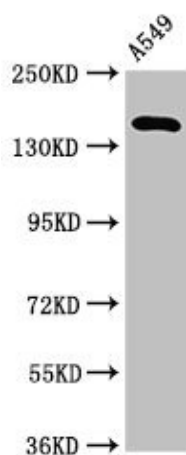
|                       |   |
|-----------------------|---|
| Product Type:         | Primary Antibodies  |
| Applications:         | IHC, WB   |
| Recommended Dilution: | Recommended dilution: WB:1:500-1:5000, IHC:1:20-1:200   |
| Reactivity:           | Human   |
| Host:                 | Rabbit  |
| Isotype:              | IgG   |
| Clonality:            | Polyclonal  |
| Immunogen:            | Recombinant Human Alpha-2-macroglobulin-like protein 1 protein (625-751AA)  |
| Formulation:          | Preservative: 0.03% Proclin 300<br>Constituents: 50% Glycerol, 0.01M PBS, pH 7.4  |
| Concentration:        | lot specific  |
| Purification:         | >95%, Protein G purified  |
| Conjugation:          | Unconjugated  |
| Storage:              | Upon receipt, store at -20°C or -80°C. Avoid repeated freeze.   |
| Stability:            | 1 year from dispatch.   |
| Database Link:        | <a href="#">A8K2U0</a>  |
| Background:           | Is able to inhibit all four classes of proteinases by a unique 'trapping' mechanism. This protein has a peptide stretch, called the 'bait region' which contains specific cleavage sites for different proteinases. When a proteinase cleaves the bait region, a conformational change is induced in the protein which traps the proteinase. The entrapped enzyme remains active against low molecular weight substrates (activity against high molecular weight substrates is greatly reduced). Following cleavage in the bait region a thioester bond is hydrolyzed and mediates the covalent binding of the protein to the proteinase (By similarity). Displays inhibitory activity against chymotrypsin, papain, thermolysin, subtilisin A and, to a lesser extent, elastase but not trypsin. May play an important role during desquamation by inhibiting extracellular proteases. |


[View online »](#)

## Product images:



Immunohistochemistry of paraffin-embedded human lung cancer using [TA388365] at dilution of 1:100



Western Blot  
Positive WB detected in: A549 whole cell lysate  
All lanes: A2ML1 antibody at 3.2µg/ml  
Secondary  
Goat polyclonal to rabbit IgG at 1/50000 dilution  
Predicted band size: 162, 106 kDa  
Observed band size: 162 kDa