

## Product datasheet for **TA388364M**

### CD300A Rabbit Polyclonal Antibody

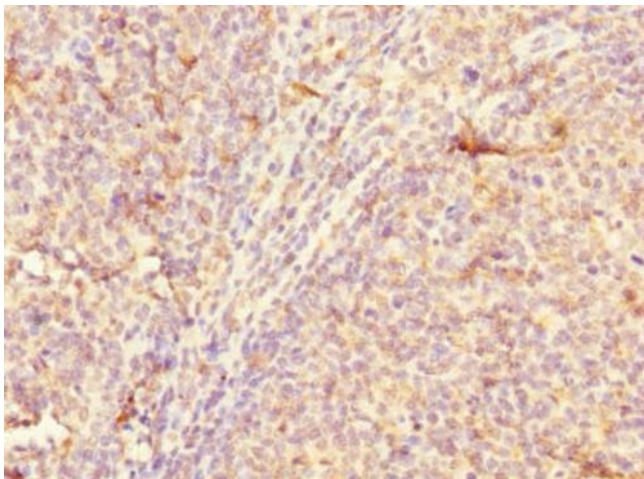
#### Product data:

Product Type:	Primary Antibodies
Applications:	IHC, WB
Recommended Dilution:	Recommended dilution: WB:1:1000-1:5000, IHC:1:20-1:200
Reactivity:	Mouse, Human
Host:	Rabbit
Isotype:	IgG
Clonality:	Polyclonal
Immunogen:	Recombinant Human CMRF35-like molecule 8 protein (18-180AA)
Formulation:	PBS with 0.02% sodium azide, 50% glycerol, pH7.3.
Concentration:	lot specific
Purification:	Antigen Affinity Purified
Conjugation:	Unconjugated
Storage:	Upon receipt, store at -20°C or -80°C. Avoid repeated freeze.
Stability:	1 year from dispatch.
Database Link:	<a href="#">Q9UGN4</a>
Background:	Inhibitory receptor which may contribute to the down-regulation of cytolytic activity in natural killer (NK) cells, and to the down-regulation of mast cell degranulation.

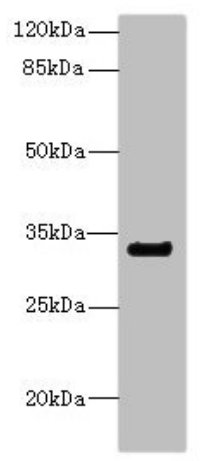


[View online »](#)

## Product images:



Immunohistochemistry of paraffin-embedded human tonsil tissue using [TA388364] at dilution of 1:100



Western blot  
All lanes: CNTN4 antibody IgG at 2.22µg/ml +  
Mouse kidney tissue  
Secondary  
Goat polyclonal to rabbit IgG at 1/10000 dilution  
Predicted band size: 34, 21, 12, 17 kDa  
Observed band size: 34 kDa