

Product datasheet for **TA388357**

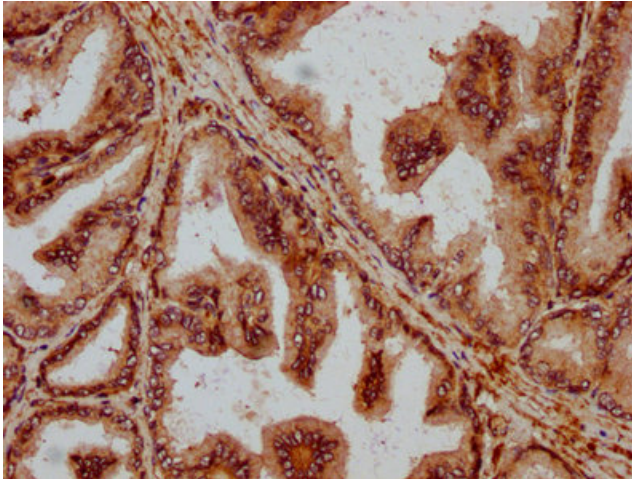
PPA2 Rabbit Polyclonal Antibody

Product data:

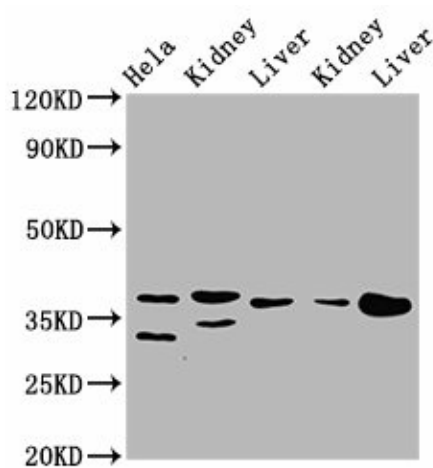
Product Type:	Primary Antibodies
Applications:	IHC, WB
Recommended Dilution:	Recommended dilution: WB:1:500-1:5000, IHC:1:200-1:500
Reactivity:	Mouse, Rat, Human
Host:	Rabbit
Isotype:	IgG
Clonality:	Polyclonal
Immunogen:	Recombinant Human Inorganic pyrophosphatase 2, mitochondrial protein (180-298AA)
Formulation:	Preservative: 0.03% Proclin 300 Constituents: 50% Glycerol, 0.01M PBS, pH 7.4
Concentration:	lot specific
Purification:	>95%, Protein G purified
Conjugation:	Unconjugated
Storage:	Upon receipt, store at -20°C or -80°C. Avoid repeated freeze.
Stability:	1 year from dispatch.
Database Link:	Q9H2U2
Background:	Hydrolyzes inorganic pyrophosphate (PubMed:27523597). This activity is essential for correct regulation of mitochondrial membrane potential, and mitochondrial organization and function (PubMed:27523598).



[View online »](#)

Product images:

IHC image of TA388357 diluted at 1:200 and staining in paraffin-embedded human prostate tissue performed on a Leica Bond™ system. After dewaxing and hydration, antigen retrieval was mediated by high pressure in a citrate buffer (pH 6.0). Section was blocked with 10% normal goat serum 30min at RT. Then primary antibody (1% BSA) was incubated at 4°C overnight. The primary is detected by a biotinylated secondary antibody and visualized using an HRP conjugated SP system.

**Western Blot**

Positive WB detected in: HeLa whole cell lysate, Rat kidney tissue, Rat liver tissue, Mouse kidney tissue, Mouse liver tissue
All lanes: PPA2 antibody at 3.1 µg/ml
Secondary
Goat polyclonal to rabbit IgG at 1/50000 dilution
Predicted band size: 38, 40, 35, 19, 26 kDa
Observed band size: 38 kDa