

## Product datasheet for **TA388345M**

### REEP5 Rabbit Polyclonal Antibody

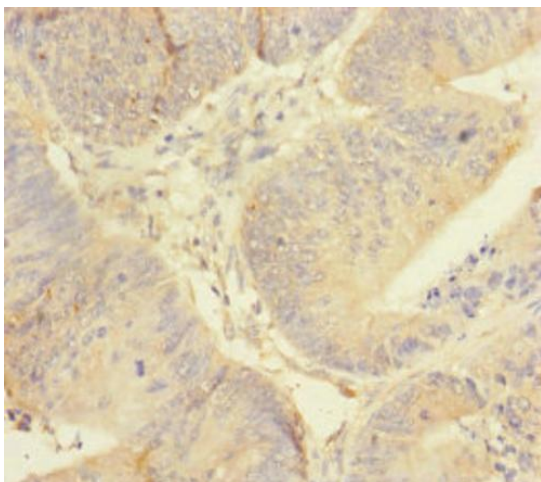
#### Product data:

Product Type:	Primary Antibodies
Applications:	IHC, WB
Recommended Dilution:	Recommended dilution: WB:1:1000-1:5000, IHC:1:20-1:200
Reactivity:	Human
Host:	Rabbit
Isotype:	IgG
Clonality:	Polyclonal
Immunogen:	Recombinant Human Receptor expression-enhancing protein 5 protein (120-189AA)
Formulation:	PBS with 0.02% sodium azide, 50% glycerol, pH7.3.
Concentration:	lot specific
Purification:	Antigen Affinity Purified
Conjugation:	Unconjugated
Storage:	Upon receipt, store at -20°C or -80°C. Avoid repeated freeze.
Stability:	1 year from dispatch.
Database Link:	<a href="#">Q00765</a>
Background:	May promote functional cell surface expression of olfactory receptors.

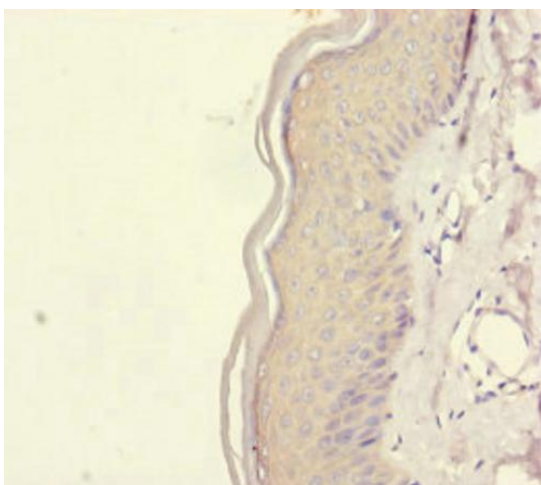


[View online »](#)

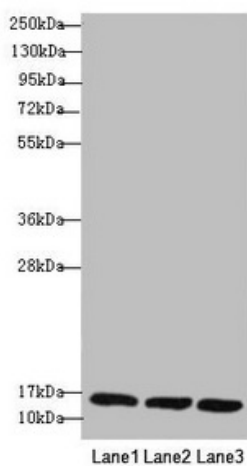
## Product images:



Immunohistochemistry of paraffin-embedded human colon cancer using [TA388345] at dilution of 1:100



Immunohistochemistry of paraffin-embedded human skin tissue using [TA388345] at dilution of 1:100



#### Western blot

All lanes: REEP5 antibody at 1.02 $\mu$ g/ml

Lane 1: MCF-7 whole cell lysate

Lane 2: K562 whole cell lysate

Lane 3: Hela whole cell lysate

#### Secondary

Goat polyclonal to rabbit IgG at 1/10000 dilution

Predicted band size: 22, 15 kDa

Observed band size: 15 kDa