

## Product datasheet for **TA388342M**

### **TUBA3E Rabbit Polyclonal Antibody**

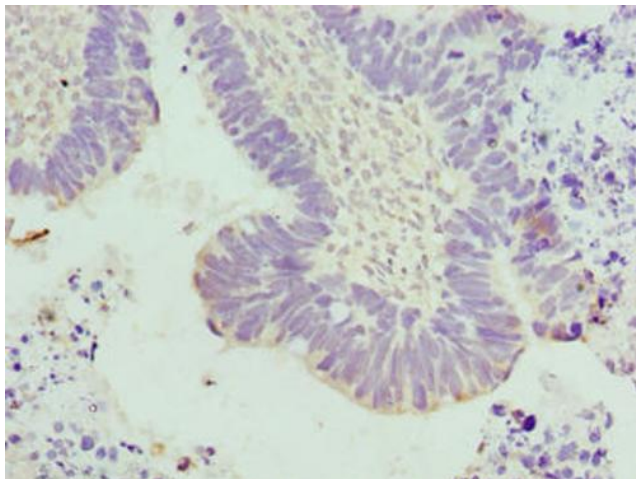
#### **Product data:**

Product Type:	Primary Antibodies
Applications:	IHC, WB
Recommended Dilution:	Recommended dilution: WB:1:1000-1:5000, IHC:1:20-1:200
Reactivity:	Human
Host:	Rabbit
Isotype:	IgG
Clonality:	Polyclonal
Immunogen:	Recombinant Human Tubulin alpha-3E chain protein (1-250AA)
Formulation:	Preservative: 0.03% Proclin 300 Constituents: 50% Glycerol, 0.01M PBS, PH 7.4
Concentration:	lot specific
Purification:	>95%, Protein G purified
Conjugation:	Unconjugated
Storage:	Upon receipt, store at -20°C or -80°C. Avoid repeated freeze.
Stability:	1 year from dispatch.
Database Link:	<a href="#">Q6PEY2</a>
Background:	Tubulin is the major constituent of microtubules. It binds two moles of GTP, one at an exchangeable site on the beta chain and one at a non-exchangeable site on the alpha chain.



[View online »](#)

## Product images:



Immunohistochemistry of paraffin-embedded human ovarian cancer using [TA388342] at dilution of 1:100



Western blot  
All lanes: TUBA3E antibody at 3 $\mu$ g/ml  
Lane 1: MCF-7 whole cell lysate  
Lane 2: HeLa whole cell lysate  
Secondary  
Goat polyclonal to rabbit IgG at 1/10000 dilution  
Predicted band size: 50 kDa  
Observed band size: 50 kDa