

Product datasheet for **TA388339**

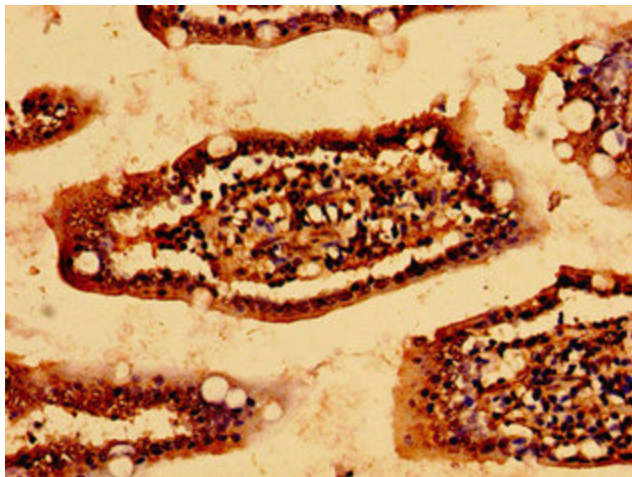
HSCB Rabbit Polyclonal Antibody

Product data:

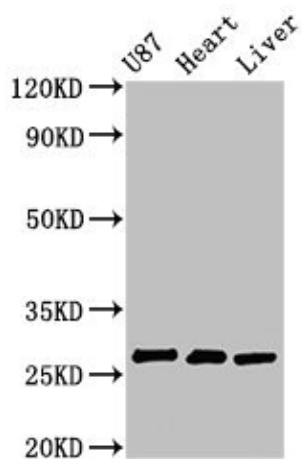
Product Type:	Primary Antibodies
Applications:	IHC, WB
Recommended Dilution:	Recommended dilution: WB:1:500-1:5000, IHC:1:20-1:200
Reactivity:	Rat, Human
Host:	Rabbit
Isotype:	IgG
Clonality:	Polyclonal
Immunogen:	Recombinant Human Iron-sulfur cluster co-chaperone protein HscB, mitochondrial protein (30-235AA)
Formulation:	Preservative: 0.03% Proclin 300 Constituents: 50% Glycerol, 0.01M PBS, pH 7.4
Concentration:	lot specific
Purification:	>95%, Protein G purified
Conjugation:	Unconjugated
Storage:	Upon receipt, store at -20°C or -80°C. Avoid repeated freeze.
Stability:	1 year from dispatch.
Database Link:	Q8IWL3
Background:	Acts as a co-chaperone in iron-sulfur cluster assembly in mitochondria.



[View online »](#)

Product images:

Immunohistochemistry of paraffin-embedded human small intestine tissue using TA388339 at dilution of 1:100



Western Blot
Positive WB detected in: U87 whole cell lysate, Rat heart tissue, Rat liver tissue
All lanes: HSCB antibody at 2.7 μ g/ml
Secondary
Goat polyclonal to rabbit IgG at 1/50000 dilution
Predicted band size: 28 kDa
Observed band size: 28 kDa