

## Product datasheet for **TA388336M**

### PBLD Rabbit Polyclonal Antibody

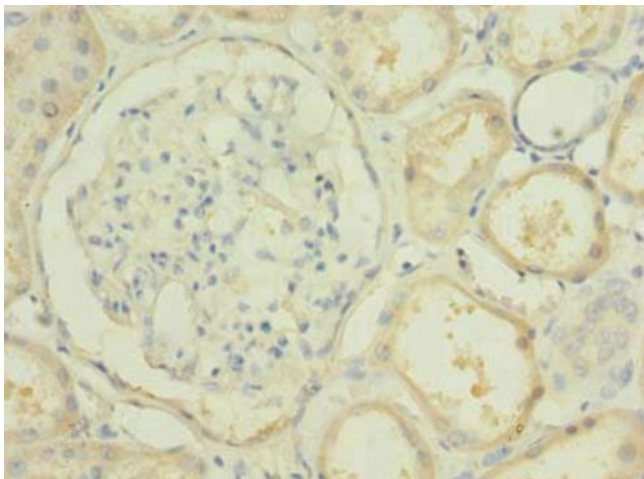
#### Product data:

Product Type:	Primary Antibodies
Applications:	IHC, WB
Recommended Dilution:	Recommended dilution: WB:1:500-1:2000, IHC:1:20-1:200
Reactivity:	Mouse, Human
Host:	Rabbit
Isotype:	IgG
Clonality:	Polyclonal
Immunogen:	Recombinant Human Phenazine biosynthesis-like domain-containing protein (11-288AA)
Formulation:	Preservative: 0.03% Proclin 300 Constituents: 50% Glycerol, 0.01M PBS, PH 7.4
Concentration:	lot specific
Purification:	>95%, Protein G purified
Conjugation:	Unconjugated
Storage:	Upon receipt, store at -20°C or -80°C. Avoid repeated freeze.
Stability:	1 year from dispatch.
Database Link:	<a href="#">P30039</a>
Background:	cytoplasm, extracellular exosome, maintenance of gastrointestinal epithelium, negative regulation of epithelial cell migration, negative regulation of epithelial cell proliferation, negative regulation of epithelial to mesenchymal transition, negative regulation of pathway-restricted SMAD protein phosphorylation, negative regulation of SMAD protein import into nucleus, negative regulation of transforming growth factor beta receptor signaling pathway

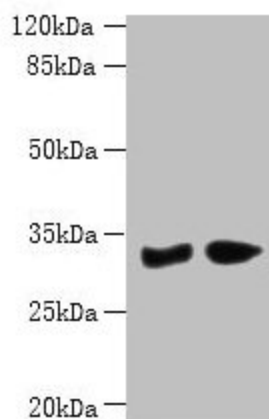


[View online »](#)

## Product images:



Immunohistochemistry of paraffin-embedded human kidney tissue using [TA388336] at dilution of 1:100



Western blot  
All lanes: PBLD antibody at 6 $\mu$ g/ml  
Lane 1: Mouse liver tissue  
Lane 2: Mouse kidney tissue  
Secondary  
Goat polyclonal to rabbit IgG at 1/10000 dilution  
Predicted band size: 32 kDa  
Observed band size: 32 kDa