

Product datasheet for **TA388335**

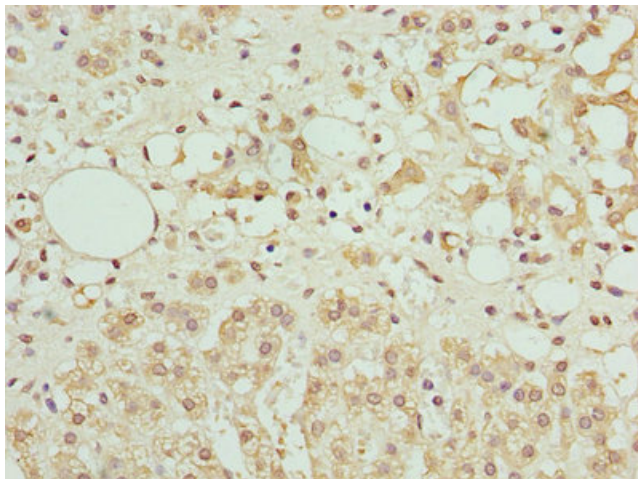
AZIN1 Rabbit Polyclonal Antibody

Product data:

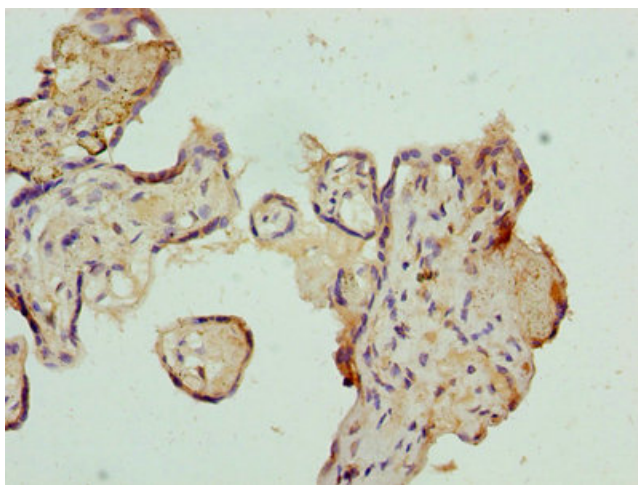
Product Type:	Primary Antibodies
Applications:	IHC, WB
Recommended Dilution:	Recommended dilution: WB:1:1000-1:5000, IHC:1:20-1:200
Reactivity:	Mouse, Human
Host:	Rabbit
Isotype:	IgG
Clonality:	Polyclonal
Immunogen:	Recombinant Human Antizyme inhibitor 1 protein (101-400AA)
Formulation:	Preservative: 0.03% Proclin 300 Constituents: 50% Glycerol, 0.01M PBS, PH 7.4
Concentration:	lot specific
Purification:	>95%, Protein G purified
Conjugation:	Unconjugated
Storage:	Upon receipt, store at -20°C or -80°C. Avoid repeated freeze.
Stability:	1 year from dispatch.
Database Link:	O14977
Background:	Antizyme inhibitor protein that positively regulates ornithine decarboxylase (ODC) activity and polyamine uptake by counteracting the negative effect of antizyme OAZ1, OAZ2 and OAZ3 on ODC1 activity (PubMed:17900240). Inhibits antizyme-dependent ODC degradation by binding to antizymes. Releases ODC1 from its inactive complex with antizymes, leading to formation of the catalytically active ODC1.



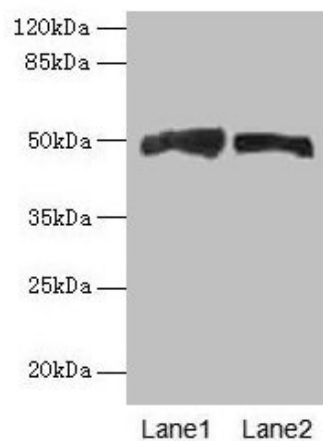
[View online »](#)

Product images:

Immunohistochemistry of paraffin-embedded human adrenal gland tissue using TA388335 at dilution of 1:100



Immunohistochemistry of paraffin-embedded human placenta tissue using TA388335 at dilution of 1:100



Western blot

All lanes: AZIN1 antibody at 4 μ g/ml

Lane 1: Mouse liver tissue

Lane 2: PC-3 whole cell lysate

Secondary

Goat polyclonal to rabbit IgG at 1/10000 dilution

Predicted band size: 50 kDa

Observed band size: 50 kDa